

PRECINCT

COMMUNITY REFERENCE GROUP

ENVIRONMENTAL FEEDBACK HOTLINE: 1800 368 737
EPA ENVIRONMENT LINE: 1300 372 842

MINUTES

Date: 5.30pm, for 5.45pm start, Wednesday, 5 March 2025

Location: Taylors Road Resource Recovery Precinct (TRRRP), 870 Taylors Road, Dandenong South

ATTENDEES

MEMBER NAME	12/10/22	14/12/22	29/03/23	28/06/23	10/10/23	27/03/24	26/06/24	25/09/24	05/03/25
Jim Houlahan (JH)	Yes	Yes	Yes	Yes	No	Yes	No	No	Yes
Ian Jenz (IJ)	No	Yes	Yes	Yes	Yes	Yes	Yes	Yes	Yes
Thelma Wakelam (TW)	Yes	Yes	Yes	No	Yes	Yes	Yes	No	Yes

GUESTS AND STAFF

- **EPA:** Tim Saliba (TS), Adam Bruce (AB)
- **Veolia:** Nick James (NJ), Ashley Kelly (AK), Jessica Keyt (JK),
- **Earthsure:** William Taggart (WT)

FACILITATOR

- Susan McNair (SMc)
- Eloise Lane (EL)

APOLOGIES

5.40pm WELCOME AND AGENDA

SMc welcomed participants and explained how the meeting would proceed.

TS and AB introduced themselves to the CRG.

5.50pm GOVERNANCE and PREVIOUS ACTIONS

AK noted that Tony O'Hara resigned from the TRRRP CRG in November 2024, and that Veolia has sent him a letter of appreciation for his contributions over the last few decades.

SMc directed members to the December 2024 minutes to view the letter sent to Tony from Veolia.

AK provided an update on outstanding actions from the previous meeting. (See Appendix 1)

PRECINCT

COMMUNITY REFERENCE GROUP

ENVIRONMENTAL FEEDBACK HOTLINE: 1800 368 737

EPA ENVIRONMENT LINE: 1300 372 842

Action March 2024 #1: Veolia to share the outcome of the Development Licence Exemption application to the CRG when received.

- Development licence for the soil wash plant has been approved, a link to the development licence has been provided in the slides.

Action March 2024 #2: EPA to share resources regarding truck requirements with Veolia.

- A link to the Waste Tracker page on the EPA website has been provided in the slides.

JH: What is the Waste Tracker?

AB: Waste Tracker is a statewide database that keeps track of reportable priority waste (RPW). It manages who generated the waste, who is transporting the waste, and where that waste is being received. It only tracks waste that is moving from site to site, so movement of waste within a site is not tracked.

TW: Who has access to that database?

AB: The EPA manages the database, but every supplier is able to report into it.

6:05pm OPERATIONAL UPDATE – Veolia

NJ and WT provided an update on general site operations:

Upkeep works – Landfill Gas Management

The key actions at the site currently being undertaken include:

- Completing detailed inspection reports of the landfill gas (LFG) infrastructure and monitoring bores to identify required upkeep.
- Installation of a second LFG flare to support any fluctuations in treatment capacity.
 - Once installed, there is potential for Veolia to triple flaring capacity in the future.
- Engagement with immediate neighbours and service providers to provide them with information on LFG risks, subsurface migration of LFG, and what they need to do if they are planning excavation works or trenching.
 - This involved going door-to-door to meet with neighbours and talk with them.

JH: Is the purpose of adding a second flare to build redundancy back up?

NJ: Yes, there was modelling done on LFG and generation, which showed a much higher rate of potential LFG extraction than what we've seen on site. We've added the extra flare to increase the capacity of the site so that we can reach that rate if we need to.

AB: What activities are happening on neighbouring sites?

NJ: Most of them are warehouses or factories, and were not concerned about excavation or trenching. One neighbour has subsurface pits that are vented and wanted to know more, so we engaged with them further and took consultants around.

PRECINCT

COMMUNITY REFERENCE GROUP

ENVIRONMENTAL FEEDBACK HOTLINE: 1800 368 737
EPA ENVIRONMENT LINE: 1300 372 842

JH: Were there concerns from Veolia that there may be issues in future? Is this why you spoke to the site's neighbours?

NJ: No, our Landfill Gas Risk Assessment was updated, which happens approximately every two years. It highlighted that there's the potential for landfills to have LFG migration. Based on the monitoring we've done, it was categorised that we should communicate that potential with neighbours.

JK: It's important to note that one of the reasons for this site to have what is considered as 'risk to notify neighbours' if they're doing sub-surface works, is that there are naturally occurring elevated levels of carbon dioxide in the soil around this site. The background concentrations are not dissimilar to what we see in our perimeter bores. We get those background concentrations of the area broadly verified by an auditor to confirm that the gas is more likely associated with the natural geology.

JH: Can you please define the term 'immediate neighbours'?

NJ: This was determined by the auditing consultant, who defined this as the abutting properties to the site. We also included Ian Jentz as we want him to be well informed.

IJ: What is the comparison between gas levels from today to five years ago?

JK: We can take this question on notice, as we don't have the numbers to hand.

ACTION #1: Veolia to source and share comparison data of gas levels from today to five years ago

The community discussed the recent updating of the site's name to Taylors Road Resource Recovery Precinct. Community members expressed that they felt it misrepresented the site through no longer referring to the landfill operations.

Veolia agreed to investigate opportunities for further information to be added to better inform the general public.

ACTION #2: Veolia to explore opportunities for further signage at the public entrance of TRRRP

Leachate ponds

The three leachate ponds on the eastern side of the site are undergoing repair works, starting in early March.

- The ponds will be deconstructed and then reformed into two ponds.
- The two ponds will have a higher capacity than the current three ponds.

AB: Will that be on the same footprint?

NJ: Yes, the ponds will have the same footprint, but an increased capacity as the old ponds had steeper walls that will be replaced with a single shallower wall in the centre.

JH: What was the reason for replacing the ponds?

PRECINCT

COMMUNITY REFERENCE GROUP

ENVIRONMENTAL FEEDBACK HOTLINE: 1800 368 737
EPA ENVIRONMENT LINE: 1300 372 842

NJ: The dividing walls had started to subside because they were too steep. Looking back in hindsight, they were designed incorrectly, so we're remedying that.

JH: Had that design error resulted in any leaking?

NJ: No, once the subsidence was noticed, we drained the ponds to double check the liners to ensure they were still intact, which they were.

JH: And is any of the treated leachate from the Hallam Rd Landfill going to be coming into the new ponds?

NJ: No, we won't be transporting leachate between the two sites.

Depackaging facility

NJ provided an update on the depackaging facility:

- The paddles in the infrastructure have been adjusted to increase the effectiveness of separation.
- The facility had an initial 65% diversion rate, which is now at 80-85%.
- Adjustment has improved recovery of organic and recyclable material.
- In 2025, the facility is quickly approaching 1000t of recovered organic material that will be diverted from landfill.

Environment

JK gave an update on the sites environmental compliance including EPA notices issued.

- EPA conducted a permission compliance assessment in late January with no further actions flagged.
- No current active notices.
- Voluntary LFG monitoring submitted monthly. Veolia provides this freely to the EPA, who have an auditor who will scrutinise this data.
- There's a lot of monitoring and management, both technical and regulatory, around LFG.
- Veolia has a third-party consultant who produces reports, and then an EPA verified auditor reviews the reports, which are then submitted to the EPA for review.
- Veolia have a new LFG monitoring contractor, who is providing more real-time data than what was received in the last few years, as well as in terms of physical site presence.

6:35pm PROJECT UPDATES (Earthsure)

WT provided an update on Earthsure projects on site:

Soil washing facility

- Civil works for the soil washing plant (SWP) have been completed, with the majority of mechanical works also done.
- Commissioning is anticipated to begin in Q3 2025
- The new wheel wash has been installed, and has improved soil tracking reduction for the entire site.

PRECINCT

COMMUNITY REFERENCE GROUP

ENVIRONMENTAL FEEDBACK HOTLINE: 1800 368 737
EPA ENVIRONMENT LINE: 1300 372 842

Dust management plan

- To manage the stockpiles of Category C soil being stored in anticipation of the SWP, a stockpile management plan is in place, the key controls being:
 - o Continuous dust monitoring device.
 - o Weekly inspections of the soil stockpile, soil storage and haul roads.
 - o A dedicated water cart has been added to manage dust as required by bedding it down.
- A specialised dust monitor has been installed on the boundary to provide real-time data.
 - o The monitor has alarms and alerts to notify staff if there is an exceedance.
 - o This dust monitor is additional on top of the standard dust deposition monitoring system in place around the perimeter of the site.
 - o Data is averaged every 15 minutes.
- The exceedance rates for the particles measured by this monitor are aligned with industrial 24-hour NEPM standards.

JH: Is there just the one? If the wind is going in different directions, then will the dust monitor actually record dust migration.

WT: For the soil washing plant, yes there is just this one monitor. Its placement is based on proximity to neighbours in the area to ensure that data will reflect where the risk to other parties may be. In future we can look at getting a second monitor or moving it.

JH: If you look at a wind rose for this site, I believe that 60% of our winds are from the South West.

WT: We don't have that information to hand, but I'm sure we can find it out. This monitor has been placed on the southwest of the site, so if that number is true, a majority of readings would be captured.

JK: We haven't received a dust complaint report in the last two years.

JH: How are staff notified if there is an exceedance? Will you be notified if it happens overnight, or just when you're onsite?

WT: The system can be set up so that if there's a breach, we can receive an email or text message, regardless of the time the data is received. We generally don't expect a breach to occur overnight, as the weather conditions need to be hot and windy for dust to rise from the stockpiles. These limits are very fine, and are tied to best practice. The EPA has requirements over our licence where Reportable Incidents must legally be disclosed, but I don't have the information as to what the Reportable Incident limit is to hand.

IJ: Does the EPA have a position on this?

AB: Continuous emissions monitoring is a good technology. It sits somewhere between industry standards and best practice. They provide good, real-time data, but are significantly more expensive than a dust deposition monitor, so it's not feasible to have them completely encircling a site. The important thing is finding the correct placement for them, and that the site responds when the alarm goes off so that there aren't impacts offsite.

ACTION #3: Veolia to investigate providing a wind rose for the site.

PRECINCT

COMMUNITY REFERENCE GROUP

ENVIRONMENTAL FEEDBACK HOTLINE: 1800 368 737
EPA ENVIRONMENT LINE: 1300 372 842

ACTION #4: Earthsure to investigate potential for further dust monitoring, and provide more information on the parameters of the dust monitoring alarm system.

6:55pm CRG UPDATES (Veolia)

AK provided an update on CRG communications:

- A questionnaire was distributed to CRG members to gather feedback on what can be improved in terms of communication to the CRG and the broader community.
- Veolia has been working to establish a new contact at the City of Greater Dandenong, who should be a constructive contact given their background and understanding of landfills.

TW: Is there a possibility of the minutes to come through sooner?

AK: Yes, we can definitely look at doing this.

Discussion was had about the supply of waste tonnage information to the CRG members over the lifespan of the CRG. Community members reflected on previous access to data that they had since the CRG's inception 25 years ago to now, and expressed interest in seeing a comparison of tonnages coming in now compared to previous years.

ACTION #5: Veolia to investigate what information can be shared in regard to historical and recent tonnages received at TRRRP

TW: Coming towards closure and the contour plan, where did conversations end up?

SMc: This was covered in previous meetings, we will pull the answer out and share it with you.

ACTION #6: Facilitator to source contour plan discussion from previous minutes

Discussion was had around the hazardous waste industry in Victoria, and what other sites can receive reportable priority waste. SMC referred the CRG to the September 2024 meeting minutes, which contain a list of approved Category A waste receipt sites.

7:15 EPA UPDATE (EPA)

TS provided an update on EPA activity at TRRRP

- EPA attended the site in late January to ensure that everything complied with Veolia's current licence, and found no issues.
- EPA has been receiving more LFG monitoring data from Veolia which has been useful, and the EPA's auditors scrutinise this data and provide us with confidence that the work is being done to a high standard.

JH: Do your inspection reports include soil or groundwater data?

PRECINCT

COMMUNITY REFERENCE GROUP

ENVIRONMENTAL FEEDBACK HOTLINE: 1800 368 737

EPA ENVIRONMENT LINE: 1300 372 842

TS: If there's contamination then there's scope for that, we don't typically investigate it otherwise.

JH: Is the data in relation to the LFG bores publicly available?

JK: They are available in our audit report that is publicly listed on the EPA website. All landfill sites in Victoria are required to do one, so you can look at the data from any landfill you'd like. They operate on a two-year cycle. Our last audit was 2020 to 2022, and 2022 to 2024 is currently being drafted.

AB: These audits are for operating landfills typically, and some high-risk closed landfills do them as well.

JH: Is TRRRP an operating landfill?

AB: Yes, any site that is still accepting waste is an operating landfill. Once they stop accepting waste and start doing rehabilitation and aftercare, then it becomes a closed landfill.

TW: How much waste has come in recently to TRRRP? Previously in the history of the CRG, the inbound tonnages were a reportable item at each meeting.

NJ: The landfill itself is quite slow; I won't share actual tonnages because that is deemed as commercially sensitive information.

AK noted that in the last three years, there has not been any exact figures shared at CRG meetings.

JH: But if that information is not shared, how does the EPA ensure that you are being compliant?

JK: We share that information with the EPA, but we choose not to disclose it publicly, as in the waste industry, it is recognised as commercially sensitive. This is because competing businesses can use that information and take business that you may have had, based on their understanding of where you're getting waste from or what your parameters are.

JH: If we look back through the meeting minutes, I'm sure we can find out how we were receiving tonnage amounts.

ACTION #7: CRG members to review historical minutes to see when tonnages have previously been reported.

JH: In previous meetings, there was some discussion around waste being transported from Victoria interstate. Can the EPA provide us with any information surrounding that?

AB: I'm not sure if we have that sort of information readily to hand, but I will have a look and see what I can find.

ACTION #8: EPA to investigate historical interstate transport of waste and share with CRG.

OTHER BUSINESS (Veolia)

AK sought any further questions from the group of which there were none.

The next TRRRP CRG meeting will be held on Wednesday 28 May.

PRECINCT

COMMUNITY REFERENCE GROUP

ENVIRONMENTAL FEEDBACK HOTLINE: 1800 368 737
EPA ENVIRONMENT LINE: 1300 372 842

7:40pm MEETING CLOSE.

Action tracker:			
Item	Action	Who	Date
Action March 2024 #1	Veolia to share the outcome of the Development Licence Exemption application to the CRG when received.	Veolia	Complete – See Appendix 1
Action March 2024 #2	EPA to share resources regarding truck requirements with Veolia.	EPA	Complete – See Appendix 1
Action March 2025 #1	Veolia to source and share comparison data of gas levels from today to five years ago	Veolia	Before next CRG
Action March 2025 #2	Veolia to explore opportunities for further signage at the public entrance of TRRRP	Veolia	
Action March 2025 #3	Veolia to investigate providing a wind rose for the site.	Veolia	Before next CRG
Action March 2025 #4	Earthsure to investigate potential for further dust monitoring, and provide more information on the parameters of the dust monitoring alarm system.	Earthsure	
Action March 2025 #5	Veolia to investigate what information can be shared in regard to historical and recent tonnages received at TRRRP	Veolia	Before next CRG
Action March 2025 #6	Facilitator to source contour plan discussion from previous minutes	Facilitator	
Action March 2025 #7	CRG members to review historical minutes to see when tonnages have previously been reported.	CRG members	Before next CRG
Action March 2025 #8	EPA to investigate historical interstate transport of waste and share with CRG.	EPA	

**TAYLORS ROAD RESOURCE RECOVERY
COMMUNITY REFERENCE GROUP**



ENVIRONMENTAL FEEDBACK HOTLINE: 1800 368 737
EPA ENVIRONMENT LINE: 1300 372 842

Appendix 1 – Veolia slides



Agenda

1

Meeting
governance

2

Governance
and
previous
actions

3

Site update

4

CRG and
Communications

5

EPA update

6

Other
business

Meeting Governance

Actions

Action	Who	Due	Slide/ Note
Share the outcome of SWP Development Licence Exemption to CRG when received	Veolia	When received	DL link
Share resources regarding truck requirements with Veolia	EPA	Before next meeting	EPA Waste Tracker Link



Operational Updates

Upkeep works - Landfill Gas Management

The key actions that the site are currently undertaking include:

- Completing detailed inspection reports of the landfill gas infrastructure and monitoring bores to identify required upkeep
- Installation of a second landfill gas flare to support any fluctuations in treatment capacity
- Engagement with immediate neighbours and service providers regarding the landfill gas management works

Leachate Ponds

- Early works for upkeep of leachate ponds 1,2,3 commencing in early March



Operational Updates

Depackager

- The paddles in the infrastructure have been adjusted to increase the effectiveness of separation.
- The adjustment has improved recovery of organic and recycable material
- In 2025 the facility is quickly approaching 1000t of recovered organic material, diverted from landfill.



General Updates

Improvement notices and actions

EPA inspections

Jan 30, 2025 - EPA conducted a permission compliance assessment with no further actions flagged.

Notice	Description	Action	Status
No active EPA notices	NA	Voluntary LFG Monitoring Program submitted to EPA monthly	NA



Project Updates

SWP Construction

Water treatment and separation

- Proven soil washing technology being installed at Taylors Road.
- Commissioning will commence Q3 2025

New wheel wash installed

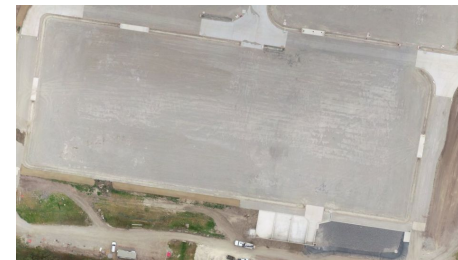
- Asset supports the whole TRRRP site



Water treatment and/ separation plant



New wheel wash



Recirculating catchment area

Project Updates

SWP Overview



Overview

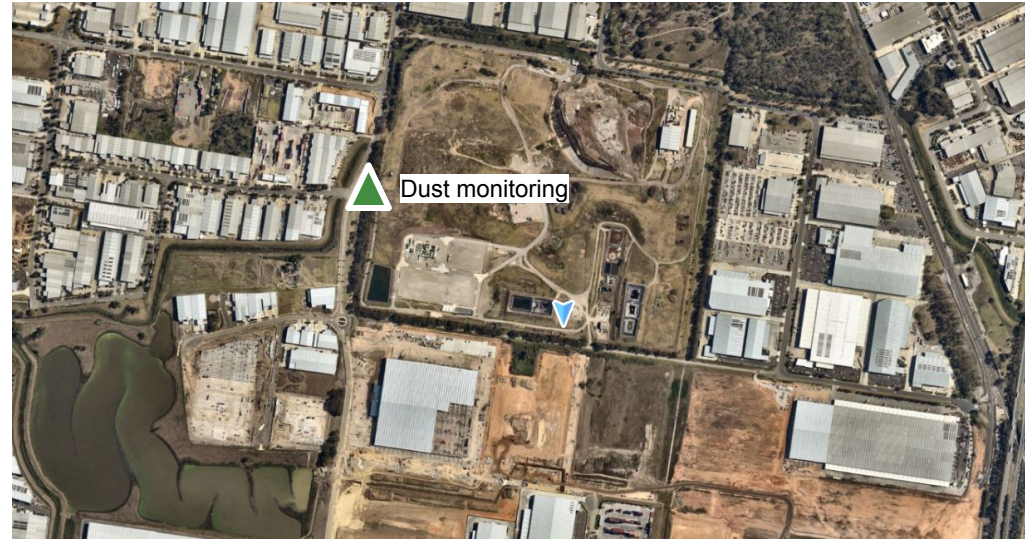
1. Material is accepted over the weighbridge using waste transport certificates and placed in the material acceptance and catchment area.
2. Untreated material is fed into the hopper, treated and allocated into particle size.
3. All treated output products are quarantined and analytically tested
4. The treated product is tested prior to off-site recycling
5. New wheel wash is utilised for all vehicles

Project Updates

SWP Management Overview

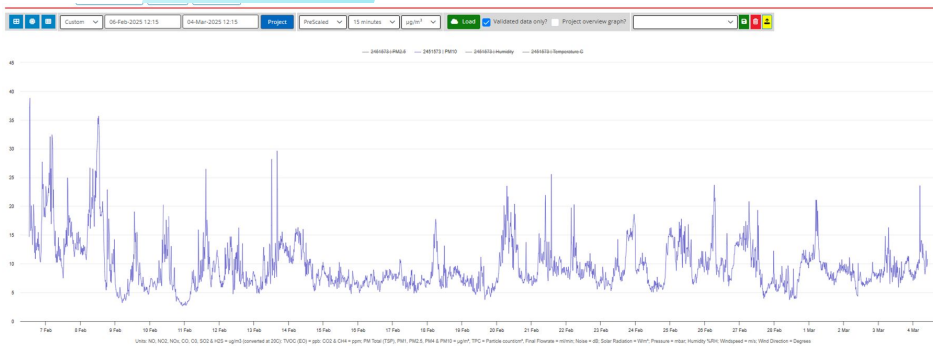
Dust management plan

- Continuous dust monitoring between SWP and TRRRP boundary - this is done at the perimeter of TRRRP.
- Daily inspection of soil stockpile, soil storage areas, and haul roads
- Dedicated water cart to manage dust as required



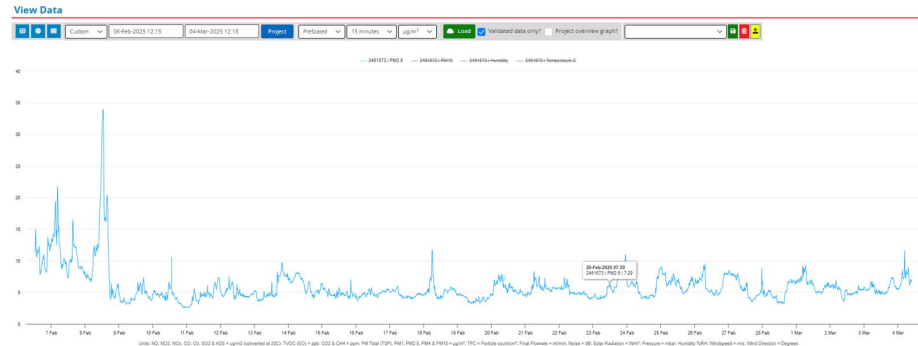
Nearmaps Feb 1 2025

SWP Management Overview - Dust Monitoring



Coarse particulate matter

The 24-hour NEPM standard for PM_{10} is $50 \mu\text{g}/\text{m}^3$. To meet this standard, PM_{10} levels on every day of the year must be below $50 \mu\text{g}/\text{m}^3$. If PM_{10} levels exceed the standard on a single day, it is classed as a ‘miss’, even if all other days of the year had much lower levels of PM_{10} . In the past 5 years, PM_{10} levels in all capital cities continued to be below the NEPM standard, but many cities (e.g. Canberra, Brisbane, Sydney) exceeded the standard in 2019 (Figure 17).



Fine particulate matter

The 24-hour NEPM standard for $\text{PM}_{2.5}$ is $25 \mu\text{g}/\text{m}^3$. To meet this standard, $\text{PM}_{2.5}$ levels on every day of the year must be below $25 \mu\text{g}/\text{m}^3$. If $\text{PM}_{2.5}$ levels exceed the standard on a single day, it is classed as a 'miss', even if all other days of the year had much lower levels of $\text{PM}_{2.5}$. Maximum measured $\text{PM}_{2.5}$ concentrations in all capital cities remain above the standard (Figure 19). [Hanigan et al. \(2019a\)](#) estimated that, in 2006–16, 2,616 deaths in Australia each year were attributable to $\text{PM}_{2.5}$ exposure, which is around 2% of all deaths.

CRG AND COMMUNICATION



- Questionnaire sent
- Discuss

What would you like to see more/less of in the CRG meetings?

Summary presentation of activities since previous meeting

What sorts of activities or communications do you think we should undertake to make sure we reach the wider community?

Newspaper articles outlining summary of activities and purpose of TRL business. Letter to neighbours outlining function of the group and invitation to join

As a CRG member what means have you found effective in supporting discussions with the wider community?

Web site particularly

EPA Updates

Thank you

