

COMMUNITY REFERENCE GROUP

ENVIRONMENTAL FEEDBACK HOTLINE: 1800 368 737
EPA ENVIRONMENT LINE: 1300 372 842

MINUTES

Wednesday, 12 June 2024 at 5:30pm	Facilitated By:	Susan McNair (Currie)
Location: Veolia Hampton Park Landfill, 274 Hallam Road, Hampton Park	Note Taker:	Lilith Palmer (Currie)

Attendees:

- **Community** – Tony O’Hara (TOH), Vernadette Dickson (VD)
- **EPA** – Bianca Sigismundi (BS), Shane Colley (SC)
- **Veolia** – Mark Globan (MG), Nick James (NJ), Ashley Kelly (AK)
- **Facilitator** – Susan McNair (SMc)
- **Note taker** – Lilith Palmer (LP)

Apologies: John Theodoridis and Shannon Lynch (community), Jess Keyt (Veolia), Paul McGrath (City of Casey).

Background materials: March meeting minutes

<ul style="list-style-type: none">• 5:35pm WELCOME AND AGENDA (Facilitator)
SMc opened the meeting, welcomed participants, shared apologies and explained how the meeting would proceed.
<ul style="list-style-type: none">• 5:35pm GOVERNANCE (Facilitator)
<ol style="list-style-type: none">1. SMc introduction<ul style="list-style-type: none">• March CRG meeting minutes distributed and can be found on the Veolia website. Enquiries can be sent to community.vic@veolia.com
5.40pm SITE UPDATE (Veolia)

COMMUNITY REFERENCE GROUP

ENVIRONMENTAL FEEDBACK HOTLINE: 1800 368 737

EPA ENVIRONMENT LINE: 1300 372 842

Operational updates

NJ gave an update on landfill gas management.

- Five gas wells have been redrilled in current cell
- Two leachate sumps will be redrilled next week after being impacted as waste settled in cells 12 and 13

Environmental action notice update

NJ gave an update on Cell 3 & 13 hotspots.

- Cell 3 is still being monitored with temperature probes. Slight elevation in temperature but nothing of concern, reporting fortnightly to EPA
- An independent review of Cell 13 has been conducted and provided to EPA – no response received yet
- The Cell 13 hotspot shows no more signs of elevated heat and is considered by Veolia and specialised consultants to be extinguished

TOD: How old is cell three?

MG: It would have been built in 2004 or 2005.

Improvement notice update: Waste contours

NJ gave an update on Cells 12 and 13.

- A risk assessment conducted by a third-party consultant indicated removing waste was higher risk and that allowing the waste to settle is the safer option
- EPA notice was revoked on April 24
- Final cap design is in review by an EPA-certified auditor

The CRG discussed the use of the terms 'EPA certified auditor' and 'EPA verified consultant' and what they meant.

BS: There are EPA-appointed auditors who are considered qualified, under EPA standards, to do these works.

Action 1: EPA to clarify the definition of an 'EPA-appointed auditor'.

VD: Will Veolia receive a penalty for exceeding the contours?

BS: That's currently under investigation.

Improvement notice update: Landfill gas risk assessment and remediation action plan

NJ gave an update on improvement notices.

- Notice issued in September requiring update to Landfill Gas Risk Assessment (LFGRA) and Remediation Action Plan (LFGRAP)
- Documents were provided to EPA in March, additional documentation was requested by EPA in April
- Veolia also implementing some recommendations made by an auditor for an updated Landfill Gas Management Plan (LFGMP) for the site
- EPA currently reviewing the LFGRA, LFGRAP and LFGMP

COMMUNITY REFERENCE GROUP

ENVIRONMENTAL FEEDBACK HOTLINE: 1800 368 737

EPA ENVIRONMENT LINE: 1300 372 842

- A Leachate Management Plan for Cell 15 is also with EPA for review

General updates: Environment reports

AK shared a graph plotting three years of complaints data.

- Data shows there's been an improvement from last year
- Fewer complaints have been received from the end of 2023 to now
- As Veolia do not receive complaints made to EPA on the same day, please let community members know that if they also make a complaint to us, it's very helpful for us in getting onto issues right away

VD: Looking at the peaks in the data there seems to be a pattern around complains in May – is there an indication of seasonality?

MG: April and May last year would be related to the interface between Cells 13 and 14b. Once that was covered you can see the complaints drop. October 2021 was when we started filling the new ponds. But yes, there can be an effect from seasonality.

VD: Another heat map from EPA would be helpful, I'm interested to know if complaints have shifted to the northern part of site.

Action 2: BS to check if EPA can provide heat map of complaints again

MG to EPA: Is there any update on complaints reports getting shared?

BS: We are looking into whether there can be a better informal system. For example, if a cluster is observed, can it be shared straight away. There have been issues with legal compliance in the past with complaints being shared.

Project updates: Cell 15 construction

NJ shared an update on construction

- Cell 15 has been split into two sections: 15a and 15b

TOD: Does splitting the cell mean there will be a wall between 15a and 15b?

MG: There's actually a ridge that runs through this part of the site. It creates a wedge of virgin land between the two sections.

TOD: So leachate cannot flow from one to the other?

MG: No.

NJ resumed presenting.

- Construction requires the removal of two leachate ponds
- Leachate treatment capacity has been incorporated into the existing Leachate Treatment Facility
- Submitted to EPA and EPA have asked for more detail on Leachate Treatment Facility

COMMUNITY REFERENCE GROUP

ENVIRONMENTAL FEEDBACK HOTLINE: 1800 368 737

EPA ENVIRONMENT LINE: 1300 372 842

BS: EPA are aware of the importance of the cell being constructed properly within a tight timeframe. The plans are being reviewed by our science team and hoping to provide a decision by the end of next week.

VD: Are these smaller than the standard cells?

MG: The base is relatively small compared to cells built in the past, but construction resembles an ice cream cone – it's wider at all top.

TOD: In the past there has been consideration of how long a cell would take to fill.

MG: Yes, cells must be comparable in terms of size because there's a limitation on how long they can be open. Cells have to be filled within two years

VD: What about existing leachate?

NJ: Leachate will be pumped out of the existing ponds. The ponds are constructed with a liner, and virgin ground underneath that.

BS: EPA has to approve the leachate removal as part of the cell design

MG: We have done this process previously at the site.

SMc sought any further questions from community members, of which there were none.

6:15pm EPA update

BS gave an update on EPA notices

- Landfill gas documents (LFGRA, LFGRAP and LFGMP) sitting with science team
- Leachate notice was revoked because of compliance by Veolia

Correction of statement [05/08]: The leachate notice had not been revoked at the time of the June CRG meeting. The notice was revoked by EPA at a later date.

COMMUNITY REFERENCE GROUP

ENVIRONMENTAL FEEDBACK HOTLINE: 1800 368 737

EPA ENVIRONMENT LINE: 1300 372 842

- Superseded by new leachate management plan required for cell 15
- Cell 3 hotspot, Veolia still reporting to EPA on

Cell 15 construction

- The first application didn't provide EPA with the confidence required for dealing with legacy leachate as well as the new cells
- We sought more work on design, which we have received and are re-assessing
- The addition of another cell means more leachate to manage

VD: Is the option for Veolia to truck leachate to the Taylors Road landfill part of EPA's consideration?

BS: Trucking the leachate off-site would be a last resort.

MG: The modelling required for the leachate management plan is based on back-to-back worst scenario years – such as no rain, too much rain. The trade waste agreement allows us to discharge through the sewer system, but to do so we must meet certain parameters. EPA sought to know our pathway for how waste would be managed if one pond was locked out, in a two-pond system. We have adopted a change in management practices whereby we utilise three tanks alongside the pond. This allows us to maintain a batch process for managing waste, whereby one tank can be filled and held until it is cleared to discharge, without interrupting the rest of the leachate system.

In the last two weeks we have put in some treatment sludge from Cowes treatment plant to generate bugs to help break down the waste. This process forms part of the cell construction design which is with EPA for assessment.

Investigation of non-compliance for overfilling of waste contours

Correction of statement [05/08]: These bullet points are in relation to other non-compliances – not the overfilling of waste contours.

- Evidence has been collected and handed over to investigators
- This investigation is currently sitting with the EPA legal team regarding next steps
- Likely to have an update within next two months

VD: We noticed there had been a change in wording on the confirmation letter for receipt of a complaint to EPA. It says investigating rather than taking regulatory action. Does this imply that the matter has been downgraded on EPA's end?

SC: The change to the language could have been made by the communications team at EPA. It should not be taken to imply that there has been a change to our approach in regarding this matter.

COMMUNITY REFERENCE GROUP

ENVIRONMENTAL FEEDBACK HOTLINE: 1800 368 737

EPA ENVIRONMENT LINE: 1300 372 842

BS: Regulatory action is what we do every day, and there has been no change in how we regulate and manage change at the site.

Action: VD to share both responses with BS to demonstrate wording change.

Update: Responses were shared, and clarification provided – see appendix 2 for further information.

MG: Regarding the investigation, are witness reports for complaints retrospective?

BS: Witnesses approached may have been more regular in their reporting, or it may have been about a specific report, or the ongoing impact of odour on them.

VD: Will EPA provide an update on the investigation timeline? The website still says May for the buffer guideline.

Action: BS to chase up website changes.

6:30 Other business

SMc acknowledged that some community questions shared ahead of the meeting were for City of Casey, who are not represented.

The group agreed that these would be forwarded on to City of Casey for responses.

Action: SMc to share questions with City of Casey and circulate responses to CRG members.

VD: Regarding the transfer station, has there been a response from EPA to a community letter?

BS: I thought a response was sent. I will follow up.

Action: BS to check whether letter from community member had been responded to.

6:36pm MEETING CLOSED

ACTION TRACKER

COMMUNITY REFERENCE GROUP

ENVIRONMENTAL FEEDBACK HOTLINE: 1800 368 737

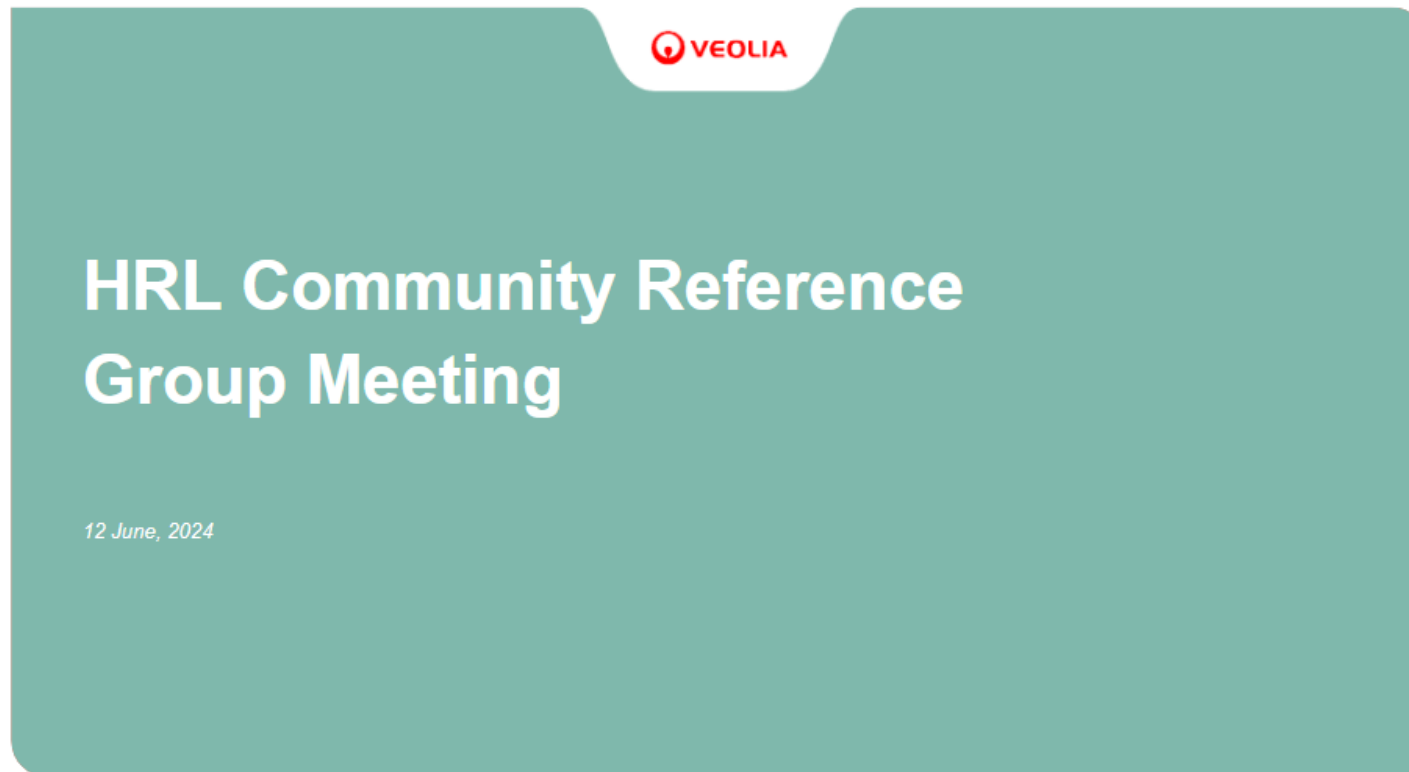
EPA ENVIRONMENT LINE: 1300 372 842

Item	Action	Who	Due
1	Clarify the definition of an 'EPA-appointed auditor'	EPA	Before next meeting
2	Check if a heat map of complaints can be provided again	EPA	Before next meeting
3	VD to share both responses with BS to demonstrate wording change.	VD, EPA	Complete (see appendix 2)
4	Make sure website has the right dates for the buffer update outcome (currently says May)	EPA	ASAP
5	Share questions with City of Casey and circulate responses to CRG members.	Currie	Before next meeting
6	Check whether letter from community member had been responded to.	EPA	Complete – letter has been sent

COMMUNITY REFERENCE GROUP

ENVIRONMENTAL FEEDBACK HOTLINE: 1800 368 737
EPA ENVIRONMENT LINE: 1300 372 842

Appendix one, Veolia presentation



COMMUNITY REFERENCE GROUP

ENVIRONMENTAL FEEDBACK HOTLINE: 1800 368 737
EPA ENVIRONMENT LINE: 1300 372 842

COMMUNITY REFERENCE GROUP AGENDA

- **Operational Updates**
 - Landfill gas management
 - Cell 3 & 13 hotspots
- **General Updates**
 - Improvement notices
 - Environmental reports and EPA input
- **Project Updates**
 - Cell 15A/B
 - Decommissioning of ponds

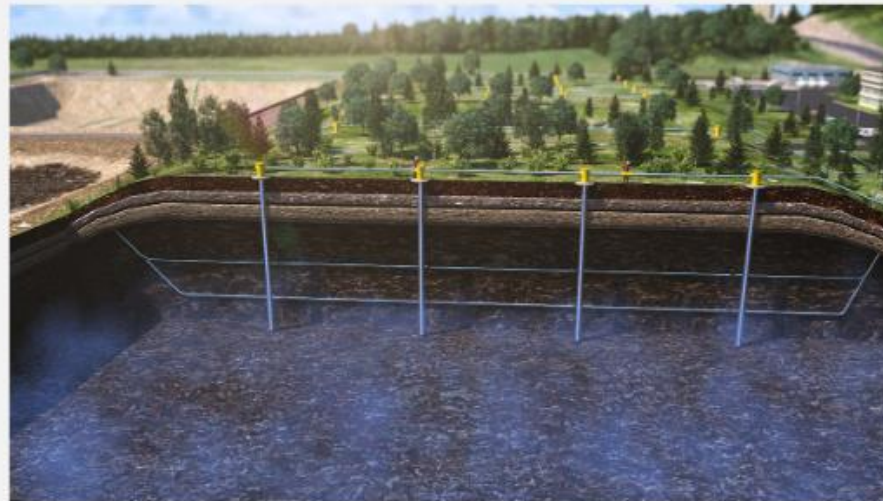
COMMUNITY REFERENCE GROUP

ENVIRONMENTAL FEEDBACK HOTLINE: 1800 368 737
EPA ENVIRONMENT LINE: 1300 372 842

OPERATIONAL UPDATES LANDFILL GAS MANAGEMENT

Upkeep of landfill gas wells and leachate sumps

- Last week 5 wells were redrilled and calibrated in the active waste mass
- Next week 2 leachate sumps will be redrilled and calibrated



Example of the well being installed in the active waste mass

COMMUNITY REFERENCE GROUP

ENVIRONMENTAL FEEDBACK HOTLINE: 1800 368 737
EPA ENVIRONMENT LINE: 1300 372 842

ENVIRONMENTAL ACTION NOTICE UPDATE CELL 3 & 13 HOTSPOTS

- Since the last update **Cell 3** remains in the **monitoring phase**
- A third party report was undertaken providing an independent review of our **Cell 13** data.
- The independent review of the data of both cells has been provided to the EPA
 - No action or response to this review has been received to date.
 - Communication and updates regarding the cells remains.



Sacrificial liner on wall of Cell 13



Material applied to Cell 3

HALLAM ROAD

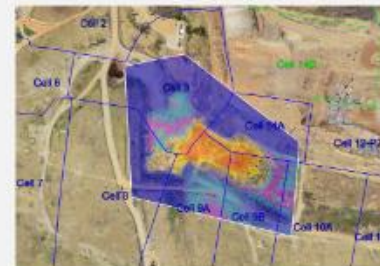
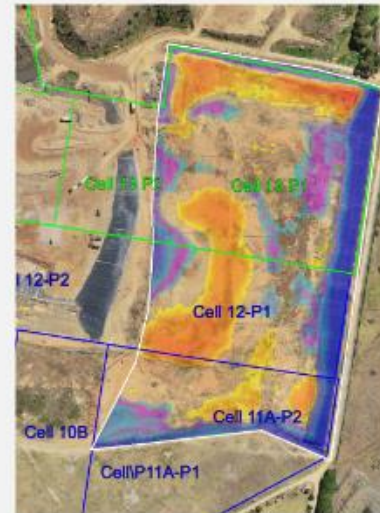


COMMUNITY REFERENCE GROUP

ENVIRONMENTAL FEEDBACK HOTLINE: 1800 368 737
EPA ENVIRONMENT LINE: 1300 372 842

IMPROVEMENT NOTICE UPDATE WASTE CONTOURS

- To recap the last meeting:
 - Each cell has a contour and there is also a final contour for all of the cells combined
 - An EPA verified consultant recommended letting the waste settle rather than relocating the waste as it will not impact rehabilitation guidelines
- Veolia believe that the approach has met the EPA's expectations for the risk management query due to the EPA notice being **revoked as of 24 April**
- The final cap design for Cell 12 / 13 is in review by an EPA certified auditor and is on track to be submitted to EPA shortly



Depiction of settlement across impacted areas

COMMUNITY REFERENCE GROUP

ENVIRONMENTAL FEEDBACK HOTLINE: 1800 368 737
EPA ENVIRONMENT LINE: 1300 372 842

IMPROVEMENT NOTICE UPDATE LANDFILL GAS RISK ASSESSMENT & REMEDIATION ACTION PLAN

- Notice issued on 15 September 2023 requiring an updated Landfill Gas Risk Assessment (LFGRA) and Remediation Action Plan (LFGRAP).
 - Environmental Auditor verified documents were provided to the EPA on 15 March 2024.
 - The auditor has requested additional assessments to be undertaken resulting in the notice being due 15 April 2024.
 - Veolia is also using this as an opportunity to meet some Auditor recommendations for an updated Landfill Gas Management Plan for the site.
- Veolia is currently undertaking a comprehensive review of the LFGMP, LFGRA and LFGRAP to identify actions to be implemented on-site
- Cell 15 - Leachate Management Plan with EPA for review



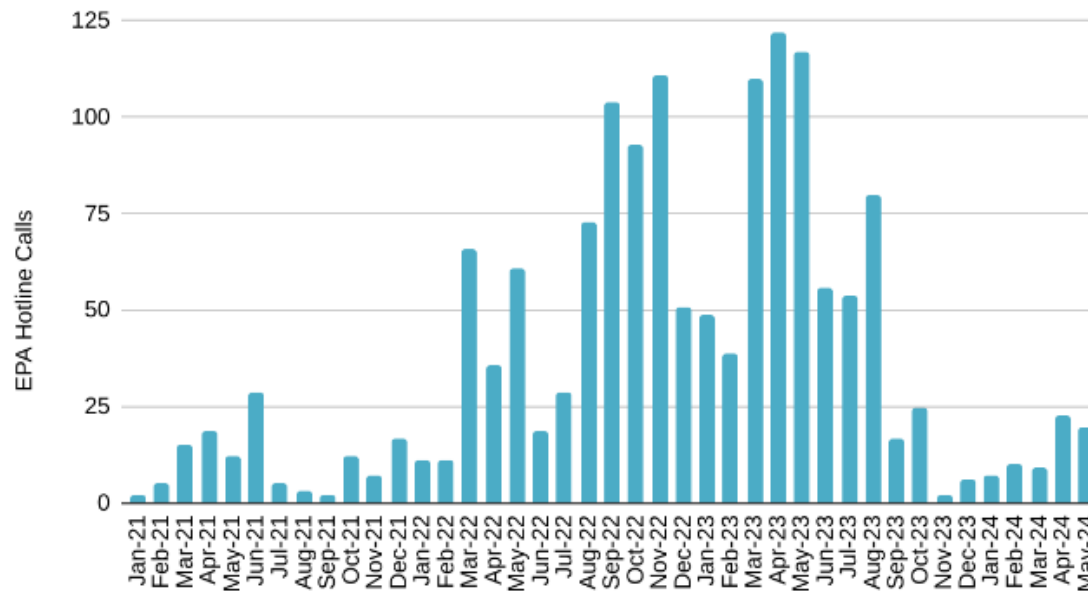
Overview of site - June

COMMUNITY REFERENCE GROUP

ENVIRONMENTAL FEEDBACK HOTLINE: 1800 368 737
EPA ENVIRONMENT LINE: 1300 372 842

GENERAL UPDATES ENVIRONMENTAL REPORTS

EPA Reports



CONTACT US

Veolia
community.vic@veolia.com
1800 368 737

EPA
contact@epa.vic.gov.au
1300 372 842

COMMUNITY REFERENCE GROUP

ENVIRONMENTAL FEEDBACK HOTLINE: 1800 368 737
EPA ENVIRONMENT LINE: 1300 372 842

PROJECT UPDATES CELL 15 CONSTRUCTION

- To recap the last meeting:
 - Cell 15 has been split into two segments 15A and 15B to reduce the time required between filled cells and intermediate capping.
 - Cell 15 construction requires the removal of two leachate ponds.
 - Treatment capacity has been planned for at the site's already established Leachate Treatment Facility.
- The new leachate management practice has been effective in generating a improved bug population to date. Observations are ongoing.
- Additional infrastructure is being explored in addition to the new methodology.
- Cell construction is pending formal EPA approval.



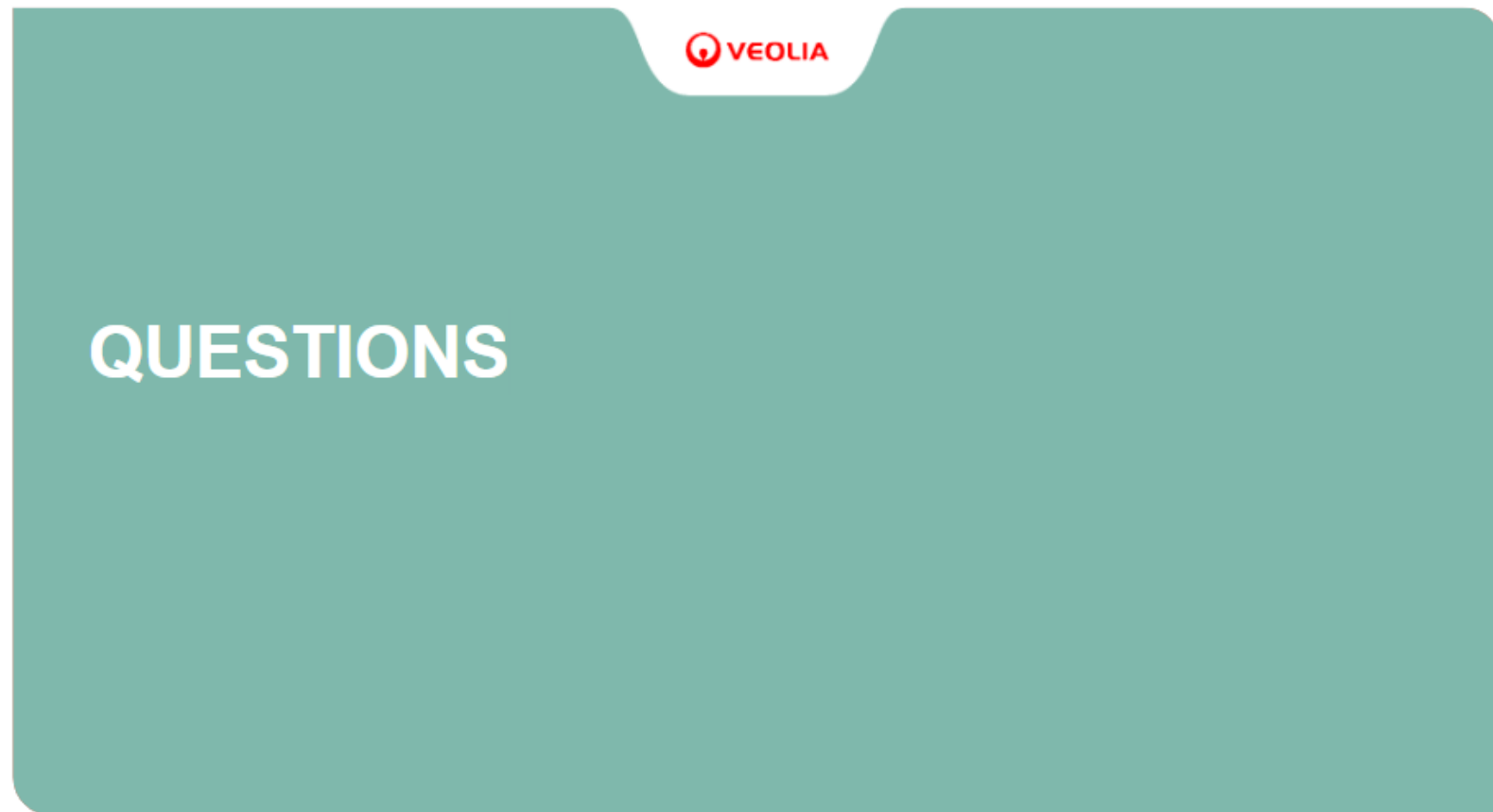
Ponds to be decommissioned before cell construction



Cell 15A/15B footprint and ponds C&D

COMMUNITY REFERENCE GROUP

ENVIRONMENTAL FEEDBACK HOTLINE: 1800 368 737
EPA ENVIRONMENT LINE: 1300 372 842



COMMUNITY REFERENCE GROUP

ENVIRONMENTAL FEEDBACK HOTLINE: **1800 368 737**
EPA ENVIRONMENT LINE: **1300 372 842**

Appendix two, EPA update on wording change

13.06.24: Email from Bianca Sigismundi to Vernadette Dickson

Morning Vern,

I was looking into this today and was not coming up with any reason why these two pollution reports would be worded so differently. I then looked into the wider case file that both pollution reports had been attributed to.

I will need to give you a little explanation of how our system works. When EPA receives a pollution report, a Case File is created for that pollution report and any actions involving that issue are assigned to that Case File. If there are multiple reports for the same issue, they are assigned to the same Case File. Due to the ongoing nature of odour from the Hallam Road Landfill, we maintain a monthly Case File for all the odour reports. Pollution reports in that monthly Case File receive feedback based on the current EPA response.

What has happened in the case of Shannon's two reports is that the second pollution report has been assigned to a different Case File for a different landfill in the Casey area. Looking at PRI-00077294, the description is of landfill odour that is consistent for both sites. Shannon does mention it is likely to be from Hallam Road Landfill, but that must have been missed as part of the triage process. The EPA feedback from PRI-00077294 is relevant to the action EPA is undertaking for the other landfill in the area, not Hallam Road Landfill.

We will get this pollution report moved into the correct Case File so the statistics are more accurate.

I hope that clears this up for everyone.
Kind regards
Bianca