

COMMUNITY REFERENCE GROUP

ENVIRONMENTAL FEEDBACK HOTLINE: **1800 368 737**
EPA ENVIRONMENT LINE: **1300 372 842**

MINUTES

Wednesday, 20 March 2024 at 5:30pm	Facilitated By: Susan McNair (Currie)
Location: Veolia Hampton Park Landfill, 274 Hallam Road, Hampton Park	Note Taker: Lilith Palmer (Currie)

Attendees:

- **Community** – Tony O'Hara (TOH), Vernadette Dickson (VD), Shannon Lynch (SL)
- **EPA** – Jo Prendergast (JP), Aaron Driscoll (AD)
- **City of Casey** – Paul McGrath (PM)
- **Veolia** – Mark Globan (MG), Nick James (NJ), Ashley Kelly (AK)
- **Facilitator** – Susan McNair (SMc)
- **Note taker** – Lilith Palmer (LP)

Apologies: John Theodoridis, Bianca Sigismundi

Background materials: September meeting minutes

5:30pm WELCOME AND AGENDA (Facilitator)

SMc opened the meeting, welcomed participants and explained how the meeting would proceed.

5:35pm GOVERNANCE (Facilitator)

1. SMc introduction

- September CRG meeting minutes can be found on the Veolia website. Enquiries can be sent to community.vic@veolia.com
- Kim Murphy is not able to remain a member of the CRG at this time due to personal reasons, but we will keep her informed

2. SMc noted previous meeting minutes and actions

ACTION 1: Incidents from last ten years graphed – Veolia have not been able to provide data in this format yet but will share for next meeting.

COMMUNITY REFERENCE GROUP

ENVIRONMENTAL FEEDBACK HOTLINE: 1800 368 737

EPA ENVIRONMENT LINE: 1300 372 842

5.45pm SITE UPDATE

Operational Updates

NJ commenced an update on operations.

Leachate management

- Last year, we started discussions with water experts around improving our water leachate process
- To enable construction of cell 15, two leachate ponds need to be removed
- This means the treatment capacity of the system has to be increased – the rate at which leachate can be treated and moved off-site
- Moving all leachate through pond one (7.3 megalitre capacity) followed by pond two (9.4 megalitre capacity) as a sequenced batch
- Process will utilise aerators from the top pond, and a process called intermittent aeration, for a more effective process which will result in an increased capacity for removing ammonia
- We have seen positive results from this approach already, reducing levels at a much faster rate than what has been done previously

NJ sought questions on the leachate management process.

TOH: If you drained the pond right down, wouldn't that create a lot more odour?

NJ: It probably wouldn't be pleasant but the stripping process is more what creates the odour

Landfill gas management

- Some work being done at the site around gas extraction
- Re-drilling of wells, now all complete and functional
- No complaints during the work

Cell hotspots

AK gave an update on hotspots.

Cell 13 – August 2023

- Environmental action notice received to make sure our monitoring was being completed
- This process included air monitoring and temperature monitoring on both surface and subsurface

COMMUNITY REFERENCE GROUP

ENVIRONMENTAL FEEDBACK HOTLINE: **1800 368 737**

EPA ENVIRONMENT LINE: **1300 372 842**

- Additional cover applied to reduce any oxygen ingress into the cell, further reducing any potential for fires
- Third party consultants have been engaged to review reporting
- Currency in last stage of closing out the requirements for the hotspot to no longer be considered active

TOH: Is the temperature still up a bit down there?

AK: There was an initial spike but has reduced and this level has been maintained. At both the surface and subsurface level

Cell 3 – February 2023

- Fire where site waste hasn't been placed in over ten years
- Managed with on-site equipment
- Fire RV not required
- Last time they visited site they our viewed management plan, were satisfied and instructed us to self-manage
- We're applying additional cover, as well as surface and subsurface monitoring
- We are mid-phase of response, monitoring will continue until lower temperatures are sustained

TOH: Do you still use thermal imaging of the site?

MG: No, we're not using thermal imagery at this time

TOH: Wasn't there a purchase of a drone for thermal imaging?

MG: We do have a drone but it isn't used for thermal imaging, we have other methods for heat monitoring

PM: Is it carbon dioxide or monoxide that needs to be watched for fire?

MG: Both of them are monitored

SL: Why wouldn't Fire RV be notified of a fire, and what is your responsibility to notify residents of a fire?

AK: Our fire management plan details that if fires can be appropriately controlled on site, that is the preference from Fire RV, which comes from direct advice from them. EPA are still notified as are CRG members, the community updates webpage and any other outputs we have.

COMMUNITY REFERENCE GROUP

ENVIRONMENTAL FEEDBACK HOTLINE: **1800 368 737**

EPA ENVIRONMENT LINE: **1300 372 842**

NJ: If an open flame was observed, it would be reported. This incident is specifically for smoke, which we can manage ourselves and Fire RV are not needed to combat.

AK: Immediate action to smoke is to apply cover to reduce oxygen, which we have better equipment on-site to address than Fire RV have.

Waste contours

- Last meeting, an update was given on waste material in cells 13 and 14a that was over the contours
- This material may settle. Veolia are evaluating over time, as moving the material could cause odour
- A consultant has been engaged to assess the different risks associated with resolving the issue
- Currently with EPA for further assessment
- In the meantime, Veolia are looking at the cap design so they can be ready to engage either way

TOH: In terms of the difference between post and pre settlement, 30 metres is a lot.

MG: It's 30,000 cubic metres, not 30 metres. So that's about half a metre over what the contour was supposed to be.

SL: In a CRG meeting last year, you shared proposed contour changes to the top of landfill. Was that because you knew it had been overfilled?

MG: No, that's a separate project ongoing since 2021. It has been going back and forth between EPA, council and ourselves in that time. It has been approved by council, but we want cell 15 finalised and approved before we go back to EPA about that.

SL: It's a little confusing if you're talking about making some areas higher, but then EPA are requesting you remove waste materials because there's too much.

MG: That's because we are referring to different parts of the site. The highest point of the landfill is still in cells 2 and 3 (demonstrates with map of site). Cell 13 is part of the site where it flattens out towards a slope at the site edge. Caps are roughly a metre thick. 2029 is when the last cell will be capped, with Veolia continuing to manage for 30 years. Over that time, clean fill will need to be utilised to maintain contours as the waste and materials settle.

TOH: Should post-settlement levels be the same as the original license or less?

COMMUNITY REFERENCE GROUP

ENVIRONMENTAL FEEDBACK HOTLINE: **1800 368 737**

EPA ENVIRONMENT LINE: **1300 372 842**

MG: The post-settlement levels will be the same as the original license. The highest point has not changed.

Improvement notice update

- Notice was issued September 15 requiring an updated Landfill Gas Risks Assessment and Remediation Action Plan
- Planning to have verified documentation, from independent auditor, to EPA on March 15
- Auditor has requested additional assessments bringing the notice date back to April 15
- During this time, Veolia are implementing recommendations made by the auditor to update the Landfill Gas Management Plan

TOH: Are the independent consultants Tonkin and Taylor?

MG: No.

VD: Who is speaking to the EPA?

MG: The auditors are liaising with EPA

Environment manager

- Lachlan James is now General Environment Manager for Australia and New Zealand. Remains based in Melbourne
- Jessica Keyt is commencing March 25 in the Environment Manager VIC/TAS role

Topics raised by CRG

AK: Thanks for sharing questions ahead of time. This allows us to give comprehensive answers.

Status of proposed transfer station

- No feedback from the EPA or Council on the application has been received by Veolia as yet. Until we receive feedback, we do not have much to update on
- The City of Casey have shared that they are waiting for guidance on separation distances from EPA before making a decision on the buffer area overlay scheme amendment
- The next transfer station CRG will be held once the EPA application has progressed.

TOH: Regarding planning permits, if council doesn't make a decision within a set time, can a permit be cancelled? If that were to happen, what happens?

MG: All avenues of review and appeal are available to all parties.

COMMUNITY REFERENCE GROUP

ENVIRONMENTAL FEEDBACK HOTLINE: **1800 368 737**

EPA ENVIRONMENT LINE: **1300 372 842**

SL: We asked council and were told they had 60 days to make a decision, without a statutory requirement for consultation. But by our calculations it has already been two months.

MG: I can't speak for council, but in my experience, the time frames are paused if additional documentation is needed, for example.

PM: City of Casey have provided a process overview to this CRG previously. Council as a whole has to maintain standards. And 'stopping the clock' does occur when we need information to make the right decision.

VD: So, council will make the decisions, it won't go back to EPA?

PM: It can do. We can seek advice if we think EPA needs to make the decision, because of technical expertise. EPA can and does provide advice on matters where council may make final decision.

VD: Where does due diligence/onus of responsibility fall on if something goes wrong in ten years?

MG: There is a lot of overlap in the applications, with many agencies involved. Melbourne Water, EPA and many others are reviewing this information. If we receive a planning permit, that doesn't mean we will receive a licence. There are a number of groups that would have responsibility depending on what the exact issue is.

PM: Our team is bit more specialised than other councils because we have more expertise, and we will seek expertise into our decisions. Not often do we not have EPA involved, but planners are who make the decisions at the end of the day and set the decisions.

JP: EPA are part of regional team, with expert teams that undertake the review process.

SMc: Could you bring in subject matter experts to explain the process?

MG: For example, landfill gas risk assessments are repeated and there is a standard process that, although evolving, could be explained. It's an iterative process to reduce risk.

SL: In a recent court case, under oath, there were landfill gas assessments not included as evidence because it did not favour the party.

SMc: I don't think the court case question is something we can understand fully right now but the idea of having a subject matter expert attend the CRG and walk us through some of these processes, sounds like it could be helpful.

COMMUNITY REFERENCE GROUP

ENVIRONMENTAL FEEDBACK HOTLINE: 1800 368 737

EPA ENVIRONMENT LINE: 1300 372 842

VD: Veolia have been very transparent, and we understand there are limitations, but with other processes being less clear the more that can be shared, the better.

SMC: Something to consider for the transfer station CRG, around the process council and EPA follow, to provide community with some clarity

TOH: I have a question on the waste transfer station question. Is it possible to see the objections against the development plan overlay, which Casey council has gone through, and checked which apply. Can we see Veolia's responses to those objections? Doesn't have to be individual objections, but overarching topics with responses.

SMc: We can look to have this provided for the next Transfer Station CRG.

Resource-co

- Veolia are not involved with Resource-co anymore, and have not been since 2013
- Veolia owns the land but that is the extent of the relationship

SL: There were some Facebook questions around truck noise that was actually from Resource-co, not Veolia.

AK: If there are concerns regarding Resource-co, you can still contact me. I will try to find a contact there to share concerns with.

MG: We can advise them to start engaging with community if there are persistent issues.

Maryvale energy from waste project

- Question on how much waste will be going to the Maryvale energy to waste project
- Maryland has been identified as one opportunity, but it depends on the type of waste received and what Maryvale can take, among other factors
- A range of destinations would be considered for waste from the transfer station

Fire incidents over 10 years

- Haven't been able to present data in a graph as yet, but the two hotspots addressed earlier are the only two we've had in the last 10 years
- Entire industry facing issues with batteries and vapes
- Outlook transfer station accepting e-waste for free as an attempt to remove from general waste stream.

COMMUNITY REFERENCE GROUP

ENVIRONMENTAL FEEDBACK HOTLINE: 1800 368 737

EPA ENVIRONMENT LINE: 1300 372 842

VD: What is classified as an incident versus a hotspot?

MG: Open-air flame or hotspots are both considered incidents.

SE Metro advanced waste processing

- Active tender that we are not able to discuss
- Unlikely that Veolia would attempt to have a waste to energy facility on this site.

TOH: Why would Veolia purchase a landfill late in it's lifespan?

MG: It's a multinational purchasing another multinational, the site was purchased as part of a much larger transfer.

Public consultation for waste transfer station on Hallam Road as at WTE Wollert?

Question submitted for EPA

JP: Yes, if we receive enough submissions. The process is called a conference of interested parties. For a development licence, it is hard to predict how long the process will take. It depends when we receive the information we need to start the process. Once it begins, EPA will start to engage with the public.

SMc: I think we have a flowchart that demonstrates this process. We can redistribute that.

What are the implications for Cranbourne golf course?

Question submitted for Council of Casey

PM: The site is located outside the 500 metre buffer zone. City of Casey will make decisions based on relevant planning controls, including the buffer zone which is set by EPA.

Community and engagement

- Community members expressed that the odour from the site has lessened significantly in recent months
- AK welcomed feedback from community on engagement activities, both positive and negative

VD: With changing weather coming soon, can we expect a shift in the site's level of odour?

AK: Usually when it is cooler the odour can stay lower, so that will be the real test. We have the recalibrated wells in place, and everything is working, so I'm confident we can maintain current levels.

Environmental reports

AK utilised a chart to show environmental reports since 2021 (slide 15).

COMMUNITY REFERENCE GROUP

ENVIRONMENTAL FEEDBACK HOTLINE: 1800 368 737

EPA ENVIRONMENT LINE: 1300 372 842

- Extracting leachate
- Replacing infrastructure in leachate sumps to use airwell system
- Improved process on treatment
- Expecting to see leachate removal discharged and repeated.

VD: Is leachate release a cost for the site?

MG: Yes.

Project updates – cell 15 construction

- Cell 15 has been split into 15A and 15B
- This is to reduce the time required between filled cells and intermediate capping
- Bulk earthworks have commenced

SL: Was 14 where we had approval problems? And it caused a smell due to digging up?

MG: There were delays due to weather. In the interface between cells 13 and 14, an area was exposed that is now sealed. Similar issues are not anticipated for these works. Problem was around the design of the grid which allows for leachate to be caught and taken to bottom.

VD: And what is the design for 15? Different to that used for the other cells?

MG: The issue was using bentonite clay. Inclement weather – rain – caused the bentonite to swell. This time we will not be using that material. Every cell is different in terms of shape, contours and so on.

VD: When do you expect 14 to be capped, and how long will 15A and 15B last?

MG: Cell 14 we are anticipating March next year it will be filled, then two years until it's capped. For 15A and 15B, we predicted 18 months to two years until they are filled.

Other questions

VD: Has there been acceptance for Veolia to do capping for 12 and 13?

MG: Design has commenced, we are engaging with a consultant to begin process. Guidance is within two years of filling. Part of 12 has a layback with 13 and 14.

JP: must be within two years to meet EPA requirements.

COMMUNITY REFERENCE GROUP

ENVIRONMENTAL FEEDBACK HOTLINE: 1800 368 737
EPA ENVIRONMENT LINE: 1300 372 842

7:06pm MEETING CLOSED

ACTION TRACKER

Item	Action	Who	Due
1	Hampton Park Transfer Station website and information: <ul style="list-style-type: none">- https://www.veolia.com/anz/our-facilities/transfer-stations/hampton-park-transfer-station- anz.hpts.engagement@veolia.com	SMc	Complete
2	Incident report over last ten years as a graph	Veolia	Before next meeting
3	Next meeting:	Currie	

COMMUNITY REFERENCE GROUP

ENVIRONMENTAL FEEDBACK HOTLINE: **1800 368 737**
EPA ENVIRONMENT LINE: **1300 372 842**



HRL Community Reference Group Meeting

March 20, 2024

COMMUNITY REFERENCE GROUP

ENVIRONMENTAL FEEDBACK HOTLINE: 1800 368 737
EPA ENVIRONMENT LINE: 1300 372 842

COMMUNITY REFERENCE GROUP AGENDA

- **Operational Updates**
 - Leachate management
 - Landfill gas management
 - Cell 3 hotspot
 - Environmental Action Notice - Cell 13 hotspot
 - Waste contours
- **General Updates**
 - Improvement notices
 - Environmental manager
 - Topics raised by CRG
 - Environmental reports and EPA input
 - Community and engagement
- **Project Updates**
 - Cell 15A/B

2
Nom de la présentation

COMMUNITY REFERENCE GROUP

ENVIRONMENTAL FEEDBACK HOTLINE: **1800 368 737**
EPA ENVIRONMENT LINE: **1300 372 842**

OPERATIONAL UPDATES **LEACHATE MANAGEMENT**

- Leachate ponds C and D need to be decommissioned to allow construction of Cell 15.
- Veolia have been working with our Veolia Water colleagues to see how we can maintain (or improve) our current treatment capacity utilising just Ponds 1 and 2.



Ponds 1 and 2



Ponds C and D

HALLAM ROAD



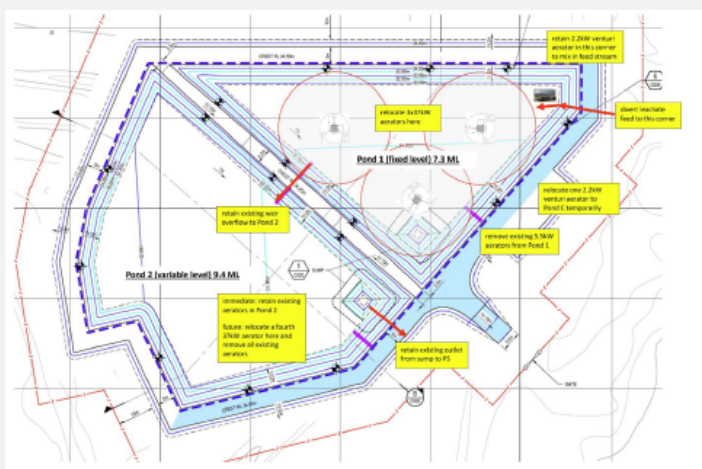
COMMUNITY REFERENCE GROUP

ENVIRONMENTAL FEEDBACK HOTLINE: 1800 368 737
EPA ENVIRONMENT LINE: 1300 372 842

OPERATIONAL UPDATES LEACHATE MANAGEMENT

Old Approach

- Aeration is the most important factor to treat ammonia.
- The way to treat ammonia is to 'strip it' and discharge it as ammonia gas (NH_3) to the atmosphere.
- Discharge the whole pond to sewer.



Ponds 1 & 2

New Approach

- Microorganisms (bugs) are the most important factor to treat ammonia.
- pH is a critical factor for healthy bugs.
- The biological nitrogen removal occurs in two sequential steps:
 - Nitrification in the presence of dissolved oxygen;
 - Denitrification, in the absence of dissolved oxygen.
- Aerators should be run in an on/off phase.
- Don't send all your bugs down the sewer. Have a dedicated treatment pond and discharge pond..
- Because we are not reliant on 'stripping' ammonia, odour should be significantly reduced.
- Pilot trial conducted with very positive results. Reduced ammonia levels by 1,400 mg/L in 4 days. Note: the retention / treatment time in bottom ponds will be >30 days.

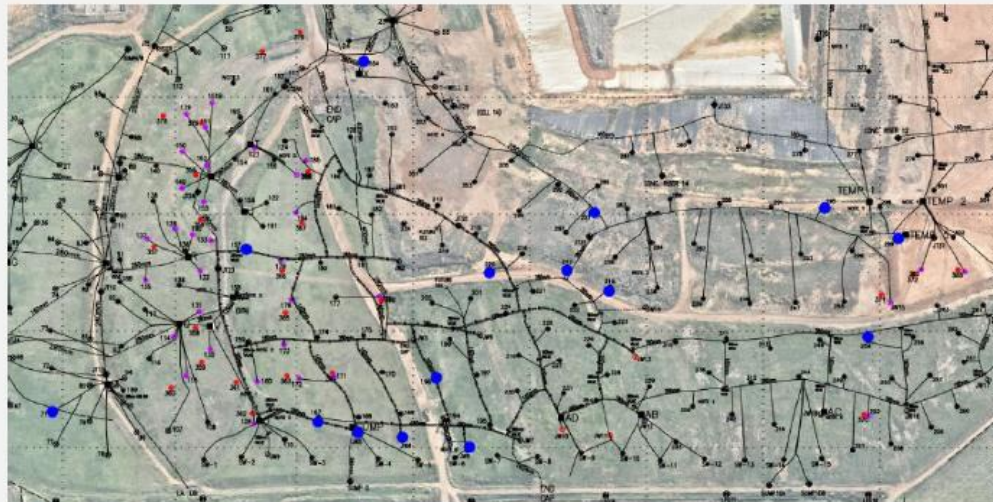
COMMUNITY REFERENCE GROUP

ENVIRONMENTAL FEEDBACK HOTLINE: 1800 368 737
EPA ENVIRONMENT LINE: 1300 372 842

OPERATIONAL UPDATES LANDFILL GAS MANAGEMENT

Landfill gas well upkeep

- Completed in January
- 16 wells addressed across Cells 7, 8, 9, 10, 11
- Calibrated and functioning
- No complaints during works



Landfill Gas Collection System network of wells

COMMUNITY REFERENCE GROUP

ENVIRONMENTAL FEEDBACK HOTLINE: 1800 368 737
EPA ENVIRONMENT LINE: 1300 372 842

ENVIRONMENTAL ACTION NOTICE UPDATE CELL 13 HOTSPOT

- In response to the smoke identified in August 2023, Veolia undertook the following:
 - Applied additional clay to the affected area.
 - Placed a sacrificial liner over the intermediate cap and removed other avenues for oxygen ingress.
 - Undertook daily subsurface temperature readings.
 - Directed the gas management contractor to inspect and monitor the gas extraction wells every two days.
 - Laboratory analysis for carbon dioxide concentrations in landfill gas.
 - On-site air quality monitoring.
 - Off-site odour monitoring.
- Veolia do not see any evidence that the hotspot in Cell 13 is still active.
- We have commissioned a third party to undertake an independent review of our data.



Sacrificial liner on wall of Cell 13

COMMUNITY REFERENCE GROUP

ENVIRONMENTAL FEEDBACK HOTLINE: 1800 368 737
EPA ENVIRONMENT LINE: 1300 372 842

OPERATIONAL UPDATES CELL 3 HOTSPOT

- Smoke was observed on Cell 3 on 8 February 2023. Waste has not been placed in Cell 3 for +10 years.
- The issue was addressed with onsite equipment as it was not necessary to draw on Fire RV resources.
- Additional cover applied and we are currently applying additional material to the intermediate cap.
- Third party air monitoring was undertaken.
- Ongoing reports being voluntarily provided to EPA.
- Gas contractor monitoring gas wells for signs of fire.
- Sub-surface temperature monitoring being undertaken by Veolia.



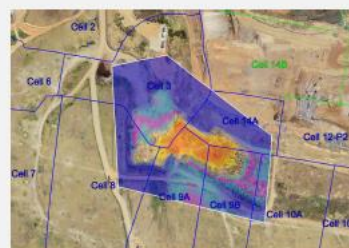
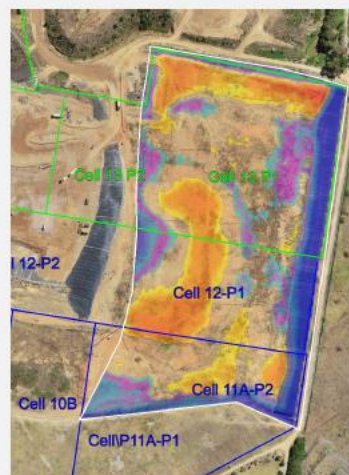
Material applied to Cell 3

COMMUNITY REFERENCE GROUP

ENVIRONMENTAL FEEDBACK HOTLINE: 1800 368 737
EPA ENVIRONMENT LINE: 1300 372 842

IMPROVEMENT NOTICE UPDATE WASTE CONTOURS

- Material above contours in September 2023 was **30,650 m³** in Cell 13 and **6,070 m³** in Cell 14A.
- Material above contours in February 2024 was **18,012 m³** in Cell 13 and **5,363 m³** in Cell 3 in the February survey.
- Assessment completed by consultant, and verified by the Environmental Auditor. The assessment recommended letting the waste settle rather than relocating:
 - The risks associated with moving the overfill are significant, particularly with regard to the risk offensive odours offsite as a result of excavating into partially degraded waste and the requirement to reduce gas extraction.
 - The settlement of the waste will not impact rehabilitation timelines for the affected area.
- Following report submission in December, in March the EPA have requested further detail about the management practice that could be implemented to reduce risks if overfill has to be removed
- Veolia have commenced final cap design with submission to EPA expected mid 2024.



COMMUNITY REFERENCE GROUP

ENVIRONMENTAL FEEDBACK HOTLINE: 1800 368 737
EPA ENVIRONMENT LINE: 1300 372 842

IMPROVEMENT NOTICE UPDATE LANDFILL GAS RISK ASSESSMENT & REMEDIATION ACTION PLAN

- Notice issued on 15 September 2023 requiring an updated Landfill Gas Risk Assessment (LFGRA) and Remediation Action Plan (LFGRAP).
- An Environmental Auditor verified document(s) was to be provided to the EPA on 15 March 2024.
 - The auditor has requested additional assessments to be undertaken resulting in the notice being due 15 April 2024.
- Veolia is also using this as an opportunity to meet some Auditor recommendations for an updated Landfill Gas Management Plan for the site.



Gas bore monitoring

COMMUNITY REFERENCE GROUP

ENVIRONMENTAL FEEDBACK HOTLINE: **1800 368 737**
EPA ENVIRONMENT LINE: **1300 372 842**

GENERAL UPDATES ENVIRONMENT MANAGER (VIC/TAS)

- Lachlan James is now General Manager Environment for Australia and New Zealand.
- A candidate has signed a letter of offer to commence on 25 March 2024 as the new Environment Manager VIC/TAS.
- Jessica Keyt has extensive experience in Waste Industry.
- Lachlan is still Melbourne based, and will continue to work with the Hallam Road Landfill team to ensure business continuity.



COMMUNITY REFERENCE GROUP

ENVIRONMENTAL FEEDBACK HOTLINE: **1800 368 737**
EPA ENVIRONMENT LINE: **1300 372 842**

GENERAL UPDATES TOPICS RAISED BY CRG

Topic	Response
Status of proposed Hampton Park Waste Transfer Station	<p>In December 2023 Veolia submitted a Planning Permit Application to the City of Casey and a Development Licence Application to the EPA for the development of this facility. It is anticipated that these applications will be considered over the coming months.</p> <p><i>"it is recommended that any decision relating to the need for a Buffer Area Overlay Scheme amendment be deferred until the EPA publishes its Separation Distance Guideline and Landfill Buffer Guideline and Council officers have reviewed and assessed the Guidelines."</i></p> <p>- City of Casey 20 February, 2024</p>
Update about the hotspot management	Update provided on slides 6 and 7.

COMMUNITY REFERENCE GROUP

ENVIRONMENTAL FEEDBACK HOTLINE: **1800 368 737**
EPA ENVIRONMENT LINE: **1300 372 842**

GENERAL UPDATES TOPICS RAISED BY CRG

Topic	Response
Resource-Co	Veolia is no longer involved with the ownership or management of Resource-Co since December 13.
Plan to remove the overfill from cells 12/13	Update provided on slide 8.
The WTE plant in Maryvale only needs 600,000 tons of rubbish to burn, they have already secured 300,000 tons from East Gippsland councils so only need another 300,000. So the excess from the WTF is going where?	The current Hallam Road landfill is facing the end of life and the aim of the transfer station is to consolidate and transfer residual waste to processing or disposal facilities, and continue to provide a local waste management solution for the community. The waste will be transferred to further process or dispose. The final destination will be subject to the type of waste and what's available at the time. Currently Maryvale is identified as an option, others are commercially sensitive at this time.
Demonstrate a record of fire incidents over 10 years.	The two hot spots the site has had over the last six months are the only hot spot occurrences over the last ten years. More broadly the industry is confronted with the challenge of manage an increase in tip face incidents from lithium ion batteries. Looking to address this, Outlook transfer station accepts and manages E-waste, batteries and vapes free, as a means of removing these from the general waste stream.
Regarding the South East Metro Advanced Waste Processing facility, would the Hampton Park property be on the radar for this facility if Veolia got the contract?	This question is unrelated to the Hallam Road Landfill Community Reference Group.

COMMUNITY REFERENCE GROUP

ENVIRONMENTAL FEEDBACK HOTLINE: 1800 368 737
EPA ENVIRONMENT LINE: 1300 372 842

GENERAL UPDATES TOPICS RAISED BY CRG

Topic	Response
To EPA: Similar to Cleanaway WTE Wollert, can community anticipate a similar opportunity for public consultation concerning the Waste Transfer Application on Hallam Road.	EPA to respond.
To Casey: What are the implications / considerations including buffer area overlay on the development of Cranbourne Golf Course	<i>The Cranbourne Community Golf club site is located to the south-east of and outside the current EPA recommended default landfill buffer of 500m for the existing Hallam Road landfill. Any future planning proposal for the golf course land will be assessed on the planning controls that apply at the time including the EPA landfill buffer guidelines, should they apply to the land.</i> - City of Casey

HALLAM ROAD



COMMUNITY REFERENCE GROUP

ENVIRONMENTAL FEEDBACK HOTLINE: 1800 368 737
EPA ENVIRONMENT LINE: 1300 372 842

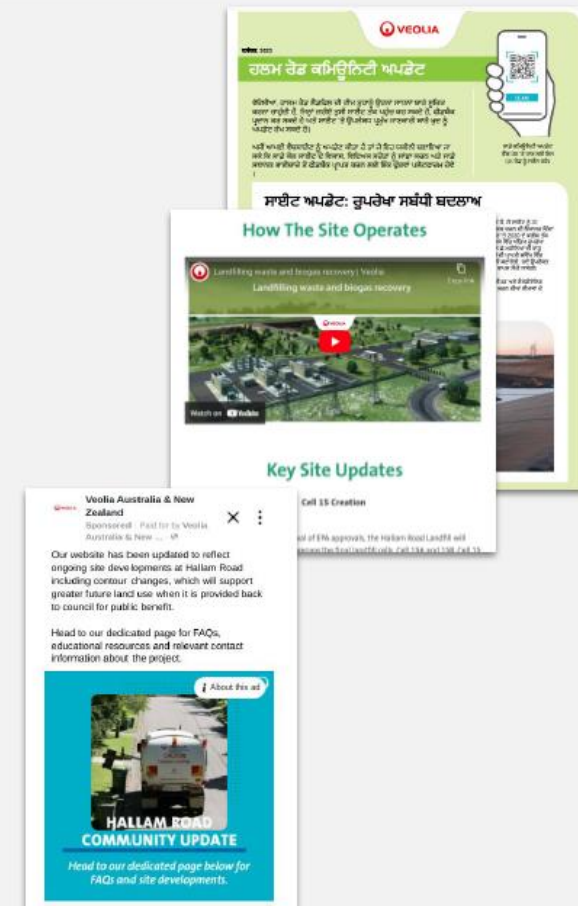
GENERAL UPDATE COMMUNITY & ENGAGEMENT

What's your feedback on these changes?

- Translations being provided
- Email notifications about operations
- Meta ads to notify of Community Update pages
- Website updates and FAQs
- Facebook and Instagram ads being used to help notify of these tools
- CRG meeting format

Additional actions and notes

- Resident contact regarding mowing

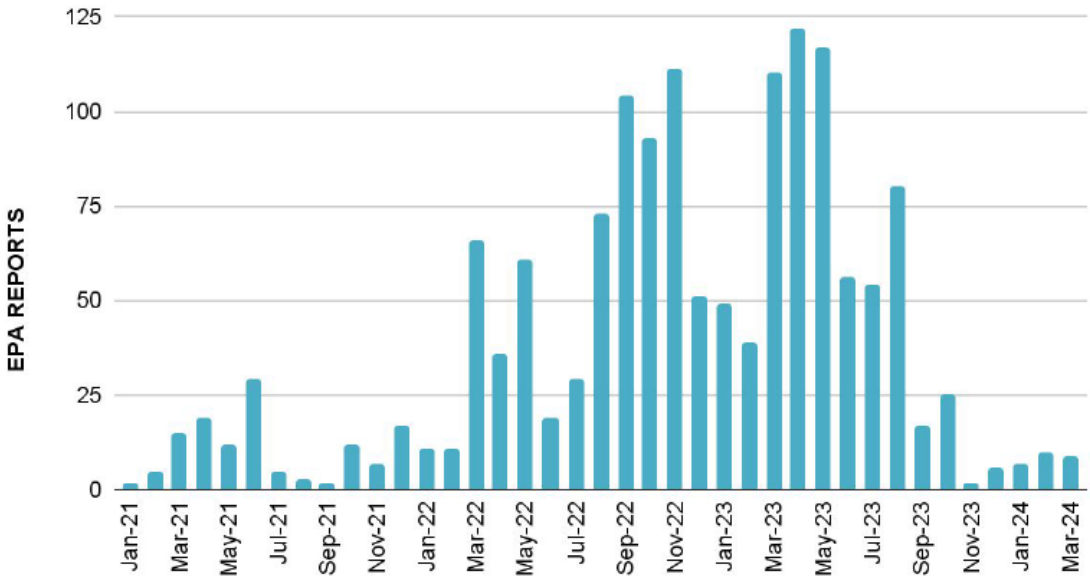


COMMUNITY REFERENCE GROUP

ENVIRONMENTAL FEEDBACK HOTLINE: 1800 368 737
EPA ENVIRONMENT LINE: 1300 372 842

GENERAL UPDATES ENVIRONMENTAL REPORTS

EPA REPORTS



Veolia:
community.vic@veolia.com
1800 368 737

EPA:
contact@epa.vic.gov.au
1300 372 842

COMMUNITY REFERENCE GROUP

ENVIRONMENTAL FEEDBACK HOTLINE: 1800 368 737
EPA ENVIRONMENT LINE: 1300 372 842

PROJECT UPDATES CELL 15 CONSTRUCTION

- Cell 15 has been split into two segments 15A and 15B to reduce the time required between filled cells and intermediate capping.
- As mentioned, Cell 15 construction requires the removal of two leachate ponds, treatment capacity has been planned for at the site's already established Leachate Treatment Facility.
- The agreed contour will be applied to the cell .
- Construction projected to be completed in early 2025



100 Olympic sized swimming pools of earth to be moved (250,000m³).



1.8 x MCG grounds lining material to be applied (36,000m²).



Cell 15A/15B footprint and ponds C&D

COMMUNITY REFERENCE GROUP

ENVIRONMENTAL FEEDBACK HOTLINE: **1800 368 737**
EPA ENVIRONMENT LINE: **1300 372 842**



Thank you

