

COMMUNITY REFERENCE GROUP

ENVIRONMENTAL FEEDBACK HOTLINE: 1800 368 737
EPA ENVIRONMENT LINE: 1300 372 842

MINUTES

Wednesday, 6 September 2023 at 5:30pm	Facilitated By: Susan McNair (Currie)
Location: Veolia Hampton Park Landfill, 274 Hallam Road, Hampton Park	Note Taker: Lilith Palmer (Currie)

Attendees:

- **Community** – Tony O’Hara (ToH), Vernadette Dickson (VD), Shannon Lynch (SL)
- **EPA** – Bianca Sigismundi (BS), Jo Prendergast (JP), Adam Rainer (AR)
- **City of Casey** – Paul McGrath (PM)
- **Veolia** – Steven Marshall (SM), Chris Watkins (CW), Lachlan James (LJ)
- **Facilitator** – Susan McNair (SMc)
- **Note taker** – Lilith Palmer (LP)

Apologies: John Theodoridis and Kim Murphy (community), Ashley Kelly (Veolia), Mark Globan (MG)

Background materials: June meeting minutes

5:45pm WELCOME AND AGENDA (Facilitator)

SMc opened the meeting, welcomed participants and explained how the meeting would proceed.

5:45pm GOVERNANCE (Facilitator)

1. SMc introduction

- June CRG meeting minutes can be found on the Veolia website. Enquiries can be sent to community.vic@veolia.com

2. SMc noted previous meeting minutes and actions

- **ACTION 1:** BS to revisit complaint data presentation, in next meeting provide a month on month, comparative with last year, and include a map indicating the general area where the complaints are coming from – Outstanding. BS to send for inclusion in these minutes.
- **ACTION 2:** To investigate noise mitigation strategy, and follow up suggestion for mitigation put forward by PM – Implemented by Veolia. Complete.

COMMUNITY REFERENCE GROUP

ENVIRONMENTAL FEEDBACK HOTLINE: 1800 368 737

EPA ENVIRONMENT LINE: 1300 372 842

5.55pm EPA UPDATE (Bianca Sigismundi and Jo Prendergast, EPA)

Community meeting on 5th September

- 23 registrations, 12 attendees on the night
- Open house style event with staff on hand to discuss permissions process
- Experts in attendance with heat maps, explaining odour monitoring and odour reports
- Representative from health as well as other experts
- Consistent themes: odour and development of site post-landfill

ToH: Not much information provided regarding the development period

JP: Not known as yet. Conference may be deemed required, which EPA would hold with Veolia

Transfer station

JP: No application has been received as yet (from Veolia), nor a referral from council. We have had preliminary talks for the planning side of things. Cannot comment much at this stage. Our process for a development licence application is to make an assessment within four months of receiving.

VD: I have a question around operations. We've heard there will be operations until midnight.

SMc: This reference group is about the landfill and there will be a separate reference group for the transfer station. We will have a separate discussion regarding the transfer station later in the meeting, so let's come back to this then.

Odour

JP: Also at the community meeting, there was lots of interest in types of odours. We were teaching people about how to identify the different odours and how to report them.

VP: Is it correct that most of the odour is around Lynbrook and Narre South?

BS: We've been doing proactive over-surveillance since the start of July. That's multiple times a week, morning and night, which seems the hours that are being affected more. We were able to confirm odour and validate some of the pollution reports. The odours are the same as what you get on the landfill site. We are looking at data from that over-surveillance to see if there is any follow-up we can do with Veolia.

Notices

BS: Multiples notices on Veolia at the moment. Improvement notice for dust and settlement (February). From our perspective we think this notice was not complied with. This notice is being followed up by our Environment Crime Branch, who are investigating whether further action required.

COMMUNITY REFERENCE GROUP

ENVIRONMENTAL FEEDBACK HOTLINE: 1800 368 737

EPA ENVIRONMENT LINE: 1300 372 842

There is also a notice for leachate management notice, which is current and ongoing.

We have an improvement notice for submission of a Risk Management and Monitoring Program (RMMP).

There was an improvement notice for an audit to be provided, but this has been reviewed and withdrawn. We will await the audit following submission of the RMMP.

We have an information gathering notice requesting data, requesting data to check that current contours are in line with permissions for pre-settlement contours.

Finally, an environmental action notice for the hotspot. We attended as soon as notified, which was immediately. We attended multiple times then and since. We inspected the site using a drone with thermal imaging to check for heated areas. Nothing too major. Veolia are managing the hotspot and reporting to us on what they are doing, delineating how big the hotspot is

VP: Are EPA managing that investigation? We don't want to take Veolia's word as given.

BS: We have inspected it multiple times. The data that Veolia is providing us, we are looking at this to see the heated areas and gases that are being produced. It's showing minimal impact off-site.

ToH: What was the leachate notice for? Is it an odour problem?

BS: That notice is from earlier in the year. Leachate levels were above limits for some cells. We wanted Veolia to provide a plan for how those leachate levels will be reduced.

ToH: The other one was for contours. Did that meet the requirements?

BS: The notice is still in play. We haven't received that data as yet.

VP: Just to go back to dust and settlement, did Veolia satisfy that one?

EPA: No, we feel that after the issue of that notice there was still settlement being tracked off-site. We have referred for further investigation. Our officers collect the evidence and provide it to specialist investigators, who will determine if there is further action that can be taken.

Veolia: It's a point of disagreement between EPA and Veolia at the moment.

VP: Where is the issue?

COMMUNITY REFERENCE GROUP

ENVIRONMENTAL FEEDBACK HOTLINE: 1800 368 737

EPA ENVIRONMENT LINE: 1300 372 842

Veolia: Tracking out to Hallam Road, hence the contention. We own the road up until Hallam Road. We think we have satisfied the requirements with the runoff area and other controls relative to any risk of harm.

AR: The site boundary ends at the weighbridge and not the front gates.

VP: Hallam Road is of more concern to residents, that's where we see lots of rubble.

Veolia: Since the notice, we have not received feedback on how to comply or what should be done in addition to the measures we already have in place.

6:00pm SITE UPDATE (Chris Watkins, Operations Manager, Lachlan James, Environmental Manager, Steven Marshall, Regional Manager, Veolia)

CW updates on the Hampton Park Hill Development Plan.

Hotspot monitoring

SM: In the early morning we became aware of a small amount of localised smoke. We notified CFA, FRV and EPA immediately. FRV attended site, not much they could do because of how small and localised the site was. They stayed for over an hour then handed control back to Veolia. Our response, which is common for fire, is to limit oxygen. Haven't seen any smoke since. We then started monitoring including using hand probes and thermal cameras looking for any elevated temperatures. We also have monitors around perimeters assessing air that would indicate a disturbance. Before irrigation we need to delineate how deep or shallow the hot spot is. Once we know that we will then irrigate if that's the best option. We will also be installing a sacrificial liner on the western wall of E13.

Veolia presented imagery of smoke on the day of the incident and the same site at midday with no smoke.

SM: Early indications suggest the hotspot is quite shallow.

ToH: What's shallow to you?

SM: Five metres. It's not deep in the scheme of the landfill. No great elevations temperature-wise.

VP: Do you use heating surveillance?

SM: EPA flew a drone that doesn't penetrate very deep, max and min temps did not show anything untoward. We also used long steel pipes to drop a thermometer.

ToH: Is the sacrificial liner to stop migration?

SM: It's to stop possible oxygen ingress

COMMUNITY REFERENCE GROUP

ENVIRONMENTAL FEEDBACK HOTLINE: 1800 368 737

EPA ENVIRONMENT LINE: 1300 372 842

ToH: Is it a chemical reaction?

SM: Highly unlikely given what we take here. A battery may have been the ignition source, but they expire quickly. A battery wouldn't still be burning.

ToH: Isn't there another site that's had a fire burning for 12 months?

SM: Yes, but that's a very different facility in terms of design and structure. Ex quarry, very vertical and not lined properly. There are a couple of reasons why we are confident that we have caught it early. If it was wide you would have seen a drop-off in gas well performance. The gas wells were still performing as normal. The lag indicator has not shown that we are behind. We are conscious of some of the experiences in the north or west of Melbourne. Our hunch is that those had been going for a while before it was identified. We're confident that we've caught this early.

ToH: Is it close to the gas line?

SM: It's not far from the gas line but gas lines here are different to home setups, it's not exposed. That in itself is not a problem.

ToH: How will you reduce the temperature?

SM: We will inject water or leachate back into the mass to reduce the temperature. Suffocate and cool. We have significant cover across the area and it's very compacted. They move slowly, the concern is that we have to make sure it's starting small, which we are confident it is and that we have caught it early.

VP: There have been two fire incidents in a matter of weeks. Regarding a management plan, if there is a catastrophic event, what is the plan? For community members safety and staff.

SM: We have a very good relationship with FRV and the Municipal Emergency Response Coordinator (MERC) from Victoria Police. We have discussed running mock scenarios at all our facilities for major events with FRV and the MERC. If there were a catastrophic event, that would not be handled by Veolia. It would be handed over to the MERC, FRV, firefighters, police, EPA, WorkSafe, local council. They are the ones that would have the decision on whether community alerts are issued, when and how.

EPA: There's a whole process for a situation like that.

SM: For Taylors Road, we sat in on incident control meetings with all of those groups to decide how the situation would be handled. There's a whole risk management approach to mitigate anything that occurs. For a battery at the active tip face we have water on site. We don't have great control if someone puts a battery into household waste, but we have a process in place in terms of controls.

COMMUNITY REFERENCE GROUP

ENVIRONMENTAL FEEDBACK HOTLINE: 1800 368 737

EPA ENVIRONMENT LINE: 1300 372 842

The reason why the current situation is not dynamic is we have controls in place. It's about avoiding catastrophic events rather than responding to them. EPA, Veolia and LMS, the gas contractor, all have skin in the game to make sure this is controlled properly. This is not the kind of thing where we will put a community note out tomorrow to say everything is sorted, we will monitor well into the future. We have brought expert consultants on board to perform monitoring, a significant financial investment.

Complaint data

LJ: There are complaints received by us. We have broken our August data down because we think there's a story to tell. There was an increase in complaints compared to June and July, but a clear trend that those occurred earlier in the month, which is when we dropped leachate quite aggressively in C14. The complaints did not relate to the hotspot.

CW: It's very difficult to build a new cell. To finish C14 we needed to put buffer sand. To place that sand, there needs to be nothing in the way. So, we had to re-expose part of the landfill, and we suspect that is what had an impact on odours. But that's the last part of the floor of the cell, in a few days we will have the entire cell with waste across it. Horizontal line is now installed and with the waste seal in, plus extra extraction, we should have the cell closed off very soon. We cannot guarantee the root cause but that's our working theory.

Notices and actions

LJ: We've touched on all of these, does anyone have any questions? The first one is the hotspot and we are responding to that data request. Dust and settlement, there is a disagreement as discussed but we still have controls in place. The leachate management plan was submitted 18 May and we are providing formal updates to EPA. Site contour model we will respond to tomorrow. The environmental audit has been revoked but we are still working towards resolution. The Risk Management and Monitoring Plan (RMMP) we have submitted a request for a review which I believe is due tomorrow.

VP: Can I clarify what the RMMP notice was about?

EPA: RMMP is a requirement of the license since the new Act came in. There was a grace period because this was a significant change. The grace period had passed, and we hadn't received RMMP back from the auditor, hence notice.

LJ: The RMMP process needs to go through an auditor, it's a little different for a landfill site, that's why we've asked for an internal review.

Landfill gas management

CW: Every cell that is not the current cell has full gas management. We have significant infrastructure into the current cell as well. In advance of filling, we promised to put to some gas wells which we have done in advance. Just a heads up that LMS are proposing to redrill 10-20 wells. They will visit site next week or the one after and target wells not performing as well as they could. Redrills don't normally make as much odour as new drills. All the wells around will still be able to pull vacuum. I

COMMUNITY REFERENCE GROUP

ENVIRONMENTAL FEEDBACK HOTLINE: 1800 368 737

EPA ENVIRONMENT LINE: 1300 372 842

don't envisage the impact being the same as a drill campaign. There are lots of controls in place. They won't leave them overnight. If they can't finish, they won't start. And redrilling wells in same spot is a far simpler process. Saying 25th September, estimating 20 wells will take two weeks. Initiated by LMS as they have rights to extract gas.

ToH: Are they running engines at the moment? Will they put more in?

CW: I don't think there will be more engines, there's the financial pressures as well as hard infrastructure limits. Lots of alternatives to straight engines these days that you can use gas, heat or electricity for. The dates may change, but Ash will keep you updated.

Contour change status

CW: No updates but I wanted to leave this in so we could discuss. We have planning permission to fill to those contours but no EPA permissions. Nothing more to say at this stage.

6.35pm PROJECTS UPDATES (Steven Marshall, General Manager, Resource Recovery, Veolia)

Proposed transfer station project

SMc: There will be a whole program of community engagement. An email has been set up for enquiries, questions or concerns. Webpage will be live on Monday which has heaps of information. We're creating a fact sheet which will be translated for key communities in this area. The plan is for the application to go in some stage in September. We will be establishing a transfer station CRG through that planning process and beyond. Looking to have first meeting in October. We will be sharing with community and encouraging involvement. Quite a lot of planning and we want to make sure community can ask questions and understand what the project involves and tell us their thoughts.

SM: Why are we doing it? We know that Hallam Landfill is coming to an end. Veolia and the state need an option for waste processing. No new landfills for Victoria so there is a need for existing volumes that would come into this site to go somewhere else. In terms of time frame, we'll be putting our lodgements in sometime in the near future.

ToH: Won't you put it in once the development plan is approved by Minister?

SM: We have the ability to lodge whenever we want but we chose to wait for Minister approval of development first. Mid to late next year we will expect to receive a decision on that plan and permit application. Initial site work likely to start end of 2024, construction running through 2025 and operations commencing mid-2026.

VP: You are lodging an application in September, and you believe it will be approved end of 2024?

SM: That's the estimate based on statutory timelines we've seen previously.

COMMUNITY REFERENCE GROUP

ENVIRONMENTAL FEEDBACK HOTLINE: 1800 368 737

EPA ENVIRONMENT LINE: 1300 372 842

VP: I think it will be fast tracked. There have been over a thousand objections. We're all about a circular economy but I cannot find a comparable waste transfer station within a similar area to residents. It may be a service to community, but we think it's not a proper location.

SM: Disagree on time frame, I think this is optimistic. More likely to have a decision two years after lodging.

SL: Is this happening elsewhere in the world where you can demonstrate that it's working?

SM: We run more waste to energy facilities around the world than landfills.

VP: But that's different to a waste transfer station.

ToH: When you look at the development overlay plan a lot of the objections are related to the waste transfer station and future development of the industrial area. How much notice has Veolia taken of the 1000+ objections?

SM: We have seen them all. We don't publicise our inner workings in terms of design, but we will need to satisfy council and EPA. We pay attention to the complaints, and we have experts from different fields making recommendations that go to our executive team.

VP: It probably would be nice to know if there was a comparable facility in terms of size – half a million tonnes.

SM: The idea today was to cover this off at a high level but we will be running the separate CRG for transfer station. In that CRG we will go into a lot more detail.

SMc: One of the plans with communications is to try and give comparisons because there are different sites, and we are looking for information and examples.

SM: We did a high-level briefing for EPA asking for initial concerns and they gave us examples of issues they had seen in the past so we can learn from those.

SL: Good to create a different CRG but for me as a community member it's death by a thousand cuts. I'm worried about when this launches. It's scary that we will have to sign up to another CRG to get information.

SMc: You don't have to join the CRG to get more information, we will ensure you can call, email and have lots of other ways to access information.

SL: What concerned me at the EPA meeting was the amount of complaints at the Dandenong South facility. But technology does change.

COMMUNITY REFERENCE GROUP

ENVIRONMENTAL FEEDBACK HOTLINE: 1800 368 737

EPA ENVIRONMENT LINE: 1300 372 842

SM: Our design will be very different to Dandenong South.

EPA: Also, operations and how facilities are managed have changed alot.

VP: I heard that the Dandenong facility had seven doors wide open with rubbish sitting for a week

CW: The Dandenong facility has a large number of doors. Our design is one entry door, exit door with all movements occurring within the facility. Easier to contain air, plus compactors rather than open top trucks for transferring of the waste. Very different design and more detail will come over the coming months.

EPA: What you can't control is trucks on the road.

SM: We can control our trucks leaving the facility.

ToH: An issue will be trucks stopping and starting, and driving through suburban areas that aren't accustomed to that.

SMc: Questions around traffic have been asked and I can point you to some information we have gathered around volume of trucks.

ToH: In relation to CRGs, when I first got involved, the purpose was to get notice of things the organisation wanted to do. We as a community group then gave input on what we thought the result might be. More reactive than proactive relationship now. I'd like to think we could go back to talking to community representatives on how it affects community. But will anything be done? How many changes will get made based on complaints. Will our CRG have any impact?

SMc: That's why Veolia has committed to getting the CRG going now, at the start of the design and planning process.

SM: There are also statutory requirements.

ToH: I'm aware of that but there are types of tick the box engagement that I have been involved in. Proper engagement is where the community gets a chance to have a say. It helps because you then find ways to solve problems before they go public. Which there would have been in the complaints that have already been sent.

SM: The complaints have already resulted in tweaks to our plans.

VP: A concern I have is the duration of hours. It was said that the site could operate midnight until six. Will timing concerns be assessed by EPA? Is it a council decision?

COMMUNITY REFERENCE GROUP

ENVIRONMENTAL FEEDBACK HOTLINE: 1800 368 737

EPA ENVIRONMENT LINE: 1300 372 842

SM: Hours are not on the licence from EPA, just the planning permission. I don't have the exact hours of what is happening when, but not all activities will be occurring at all operational hours. There are restricted windows for different activities.

SMc: That's something we will get more information on for you.

SL: Because it's rezoned, as long as you're not impeding on the residential zones in terms of noise.

SM: We still have to have a permit for hours, which council will determine that will dictate our hours.

ToH: Be prepared for complaints about noise pollution in the middle of the night.

EPA: We can intervene if the site is running outside of its licensed hours.

CW: At times we have 24-hour operations running on this site.

VP: I think within is fine, but the concern is buses coming in and out.

SMc: We will check those and come back to you with more detail and let you know when the webpage goes live.

EPA: We will assess risks to human health and environment including noise. Our guidelines have times for activities and operators, including reduced limits, which will be taken into account in the development of the licence.

SMc: I will let you know when the webpage goes live and share as much information as we can.

ToH: We can share that to anyone?

SMc: Yes, it will be publicly available.

Management changes

SM: Myself and Chris are leaving. Mark Globan has been appointed as Resource Recovery General Manager.

Chris finishes Friday next week, Steven finishes end of October.

Community engagement

SMc: Ash has been circulating regular CRG emails, various factsheets and resources are available online now. Ash is keen for feedback. He is on leave for nearly a month, I'll be helping to look after communications in his absence.

COMMUNITY REFERENCE GROUP

ENVIRONMENTAL FEEDBACK HOTLINE: 1800 368 737
EPA ENVIRONMENT LINE: 1300 372 842

7:06pm MEETING CLOSED

ACTION TRACKER

Item	Action	Who	Due
1	Hampton Park Transfer Station website and information: - https://www.veolia.com/anz/our-facilities/transfer-stations/hampton-park-transfer-station - anz.hpts.engagement@veolia.com	SMc	Complete
2	Odour update (month on month data, map)	EPA	Before next meeting
3	Next meeting: 6 December (TBC) – BBQ combined with Taylors Road CRG	Currie	

HALLAM ROAD



COMMUNITY REFERENCE GROUP

ENVIRONMENTAL FEEDBACK HOTLINE: 1800 368 737
EPA ENVIRONMENT LINE: 1300 372 842



Hallam Road Landfill Community Reference Group

September 6, 2023

COMMUNITY REFERENCE GROUP

ENVIRONMENTAL FEEDBACK HOTLINE: 1800 368 737
EPA ENVIRONMENT LINE: 1300 372 842



WELCOME

EPA Update

- Community Information Session update
- Site update

General Site Update

- Hotspot response, monitoring and actions
- Site monitoring and reporting summary
- Notices and actions summary

Development Projects

- Contour change status
- Transfer Station update

Other Business

- Management changes

COMMUNITY REFERENCE GROUP

ENVIRONMENTAL FEEDBACK HOTLINE: 1800 368 737
EPA ENVIRONMENT LINE: 1300 372 842

HOTSPOT MONITORING

Situation

Smoke was observed on the batter of Cell 13.

Landfill hotspots are areas of high temperature deep within landfills that generate localised smoke and strong odours - EPA

Generally hotspots can be introduced from too much oxygen entering the landfill.

The actions undertaken by Veolia will help prevent further oxygen from getting in to the landfill cell.

Response

Fire Rescue Victoria and EPA were notified.

FRV were comfortable with Veolia's Response Plan and handed control of site back to Veolia. No controls were implemented by FRV.

EPA undertook monitoring and observations. No impacts noted.

EPA issued an Environmental Action Notice to ensure Veolia continue to monitor the situation using an agreed methodology.

Outcome (to date)

The initial actions appear to have controlled the issue. **Placing clean fill** (clean soil) over the area has stopped the smoke. This is done to take oxygen away from the area.

Monitoring is ongoing but initial data using temperature probes and sensors on landfill gas wells are indicative of the hotspot being shallow.

Wells have been prepared to commence **irrigation of the waste mass**.

Procurement has commenced to **install sacrificial plastic** to prevent oxygen reaching the waste mass.

COMMUNITY REFERENCE GROUP

ENVIRONMENTAL FEEDBACK HOTLINE: 1800 368 737
EPA ENVIRONMENT LINE: 1300 372 842

HOTSPOT MONITORING



Smoke observed early Aug 16



EPA undertake environmental observations



No smoke by midday Aug 16 following initial clean fill cover



Cross section of the Cell 13 batter being monitored.



Air monitoring equipment set up on site.

Probes and sensors on network of landfill gas wells support temperature monitoring.

 Norm de la présentation

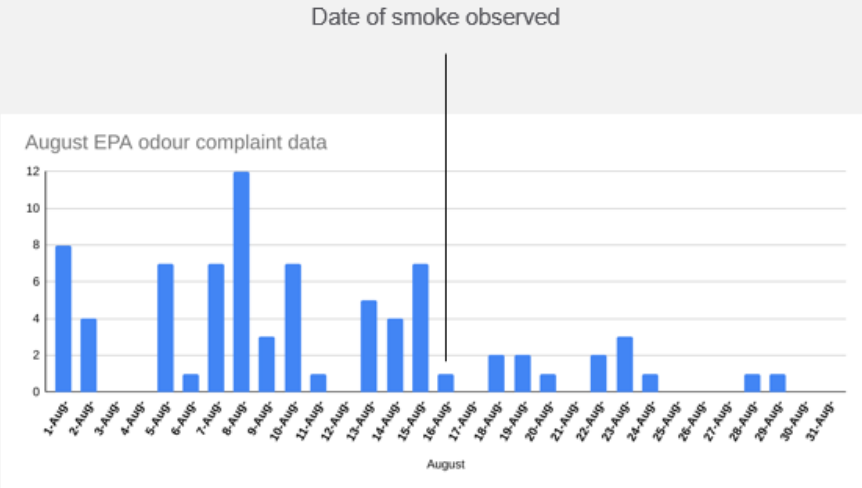
HALLAM ROAD



COMMUNITY REFERENCE GROUP

ENVIRONMENTAL FEEDBACK HOTLINE: 1800 368 737
EPA ENVIRONMENT LINE: 1300 372 842

GENERAL SITE UPDATE: COMPLAINT DATA



COMMUNITY REFERENCE GROUP

ENVIRONMENTAL FEEDBACK HOTLINE: 1800 368 737
 EPA ENVIRONMENT LINE: 1300 372 842

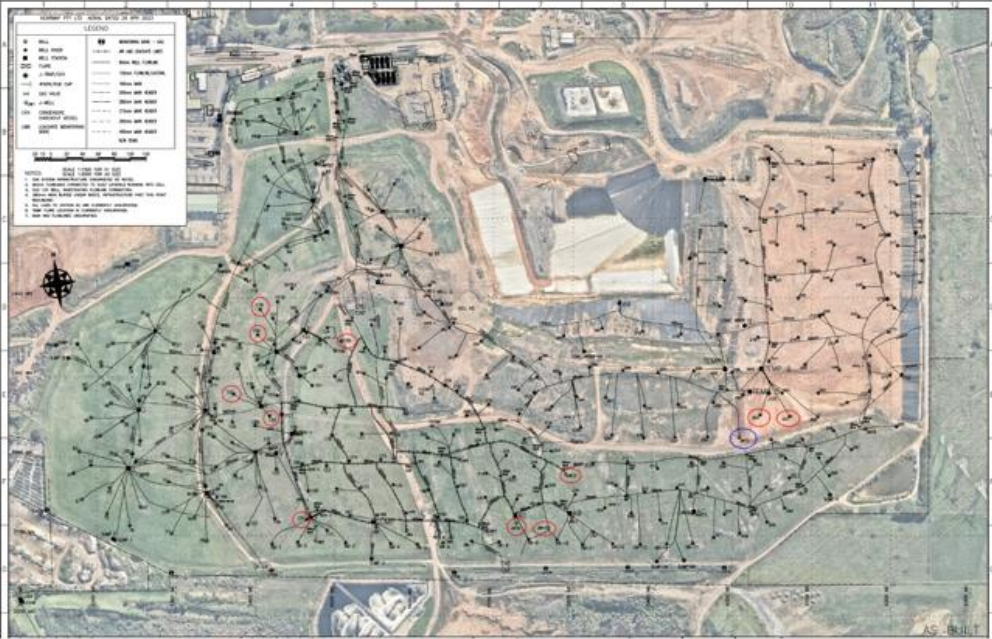
NOTICES AND ACTIONS

Environmental Action / Improvement Notices	Overview / Progress Summary
<p>EAN-00005296-1 Hotspot Management Aug 18, 2023</p>	<p>This notice provides reporting conditions and holds Veolia accountable to their emergency response plan. <i>In progress - Monitoring established and reporting ongoing</i></p>
<p>IMPN-00004067 Dust and Sediment</p>	<p>Monitoring and maintenance of infrastructure. <i>Veolia's position is that we have complied with the Notice.</i></p>
<p>IMPN-00003834 Leachate</p>	<p>An Improvement Notice requires Veolia to provide an updated Leachate Management Plan to EPA by 18 May 2023 and to follow the plan and report the results to EPA every 3 months until March 2024 <i>In progress</i></p>
<p>IGN-00005144 Site Contour Model</p>	<p>An Information Gathering Notice to provide an approved contour plan to EPA by 7 September 2023. <i>On track for a response by due date.</i></p>
<p>IMPN-00005059 Environmental Audit</p>	<p>An Improvement Notice requires Veolia to have an EPA-appointed auditor to complete an audit of the landfill operations by 3 November 2023 <i>Notice revoked by EPA on 5 September 2023</i></p>
<p>IMPN-00005065 Risk Management & Monitoring Plan</p>	<p>An Improvement Notice requires Veolia to give an EPA-appointed auditor-verified Risk Management & Monitoring Program (RMMP) to EPA by 15 September 2023 <i>Veolia have submitted a request for internal review as we believe the Notice is not warranted. Works already significantly progressed when the Notice was issued.</i></p>

COMMUNITY REFERENCE GROUP

ENVIRONMENTAL FEEDBACK HOTLINE: 1800 368 737
EPA ENVIRONMENT LINE: 1300 372 842

OPERATIONAL UPDATE: LANDFILL GAS MANAGEMENT



- Proposed Gas Well maintenance:**
- Redrill 10 to 20 wells across site
 - Commencing 25th Sept for two weeks
 - This work is undertaken to improve the effectiveness of wells that can be affected by cell settlement.

HALLAM ROAD



COMMUNITY REFERENCE GROUP

ENVIRONMENTAL FEEDBACK HOTLINE: 1800 368 737
EPA ENVIRONMENT LINE: 1300 372 842

**DEVELOPMENT PROJECTS
CONTOUR CHANGE STATUS**



HALLAM ROAD



COMMUNITY REFERENCE GROUP

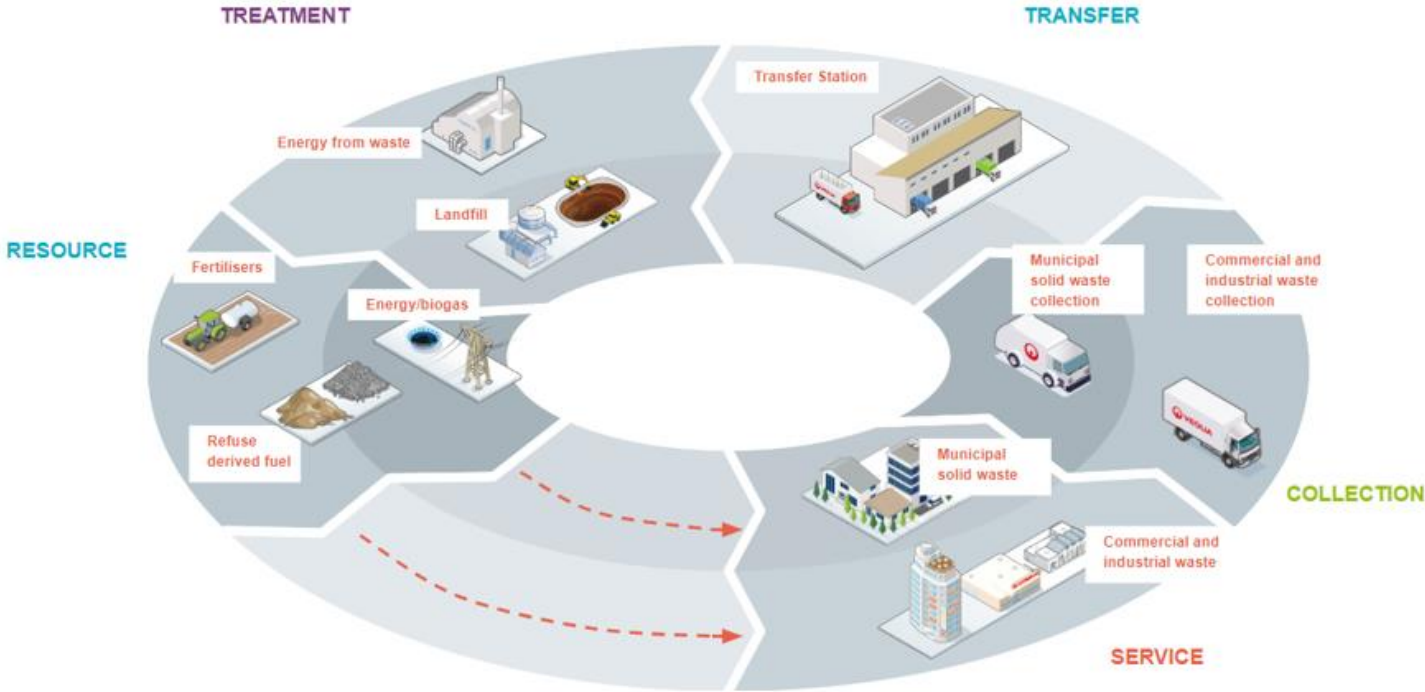
ENVIRONMENTAL FEEDBACK HOTLINE: 1800 368 737
EPA ENVIRONMENT LINE: 1300 372 842

We're committed to keep the community updated

- anz.hpts.engagement@veolia.com
- Web page
- FAQs
- Factsheet
- Hampton Park Transfer Station CRG



Waste management FUTURE NEEDS



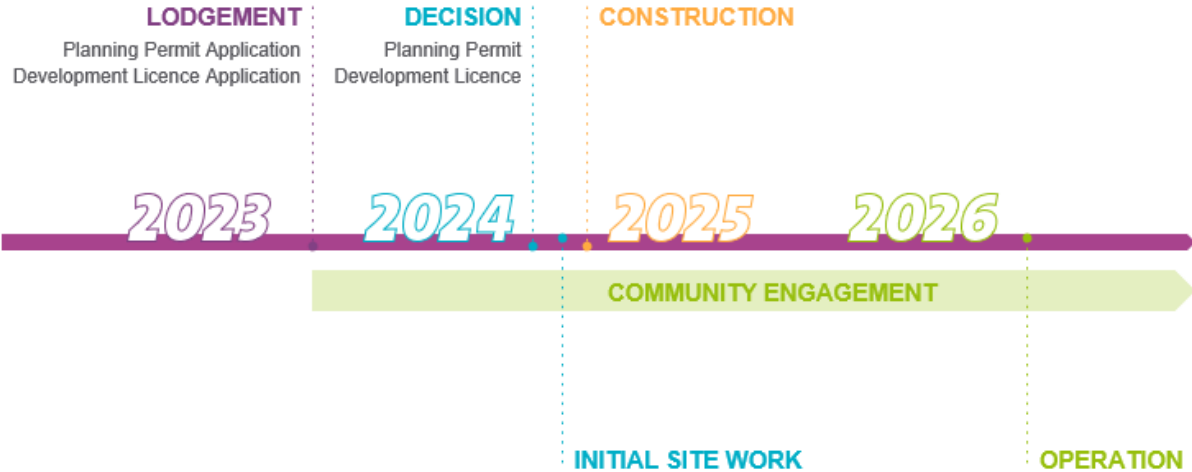
HALLAM ROAD



COMMUNITY REFERENCE GROUP

ENVIRONMENTAL FEEDBACK HOTLINE: 1800 368 737
EPA ENVIRONMENT LINE: 1300 372 842

Proposed facility PLANNING PROCESS



HALLAM ROAD



COMMUNITY REFERENCE GROUP

ENVIRONMENTAL FEEDBACK HOTLINE: 1800 368 737
EPA ENVIRONMENT LINE: 1300 372 842

OTHER BUSINESS MANAGEMENT CHANGES

Leaving:

- Landfills Manager - Chris Watkins
- Resource Recovery General Manager - Steven Marshall

Appointed:

- Recovery General Manager - Mark Globan



COMMUNITY REFERENCE GROUP

ENVIRONMENTAL FEEDBACK HOTLINE: 1800 368 737
EPA ENVIRONMENT LINE: 1300 372 842

COMMUNITY ENGAGEMENT

Since the last meeting further resources are available:

- Regular CRG emails circulating
- HRL Community Updates page live!
 - FAQs established
 - Fact sheets and educational resources posted online
 - EPA updates linked

Feedback on resources and updates welcomed.

Continued link for community while on leave

Landfill Community Enquiries:

1800 368 737
community.vic@veolia.com



HALLAM ROAD



COMMUNITY REFERENCE GROUP

ENVIRONMENTAL FEEDBACK HOTLINE: 1800 368 737
EPA ENVIRONMENT LINE: 1300 372 842



Thank you

