

# Notice of Modification

## Section 75W of the *Environmental Planning & Assessment Act 1979*

As delegate of the Minister for Planning, I modify the Project Approval referred to in Schedule 1, subject to the conditions in Schedule 2



Ben Lusher  
Acting Executive Director  
Key Sites and Industry Assessments

Sydney

9 SEPTEMBER

2016

### SCHEDULE 1

**Development Approval:** MP 10\_0012 granted by the Planning Assessment Commission on 16 March 2012

**For the following:** Woodlawn Waste Expansion Project

**Proponent:** Veolia Environmental Services (Australia) Pty Ltd

**Approval Authority:** Minister for Planning

**The Land:** Woodlawn Bioreactor site: Lot 19 DP 827588, Lots 25, 30, 33, 34, 69, 88 & 91 DP 754919, Lot 4 and 5 DP 830765, Lot 1 DP 241092

Crisps Creek Intermodal Facility site: Lot 1 DP 1045652

**Modification:** MP 10\_0012 MOD 1: Modification for changing the site water and leachate management to allow the use of:

- ED2 for the mine void storm water storage; and
- ED3S for treated leachate storage.

### SCHEDULE 2

The above approval is modified as follows:

- (a) Schedule 2 Definitions is amended in alphabetical order by the insertion of the **bold and underlined** words / numbers and deletion of ~~struck-out~~ words/numbers as follows:

Department	Department of Planning and <b><u>Environment</u></b> Infrastructure
Director-General	Director-General of the Department (or delegate)
<del>DPI-Water</del>	<b><u>Department of Primary Industries –Water</u></b>
<del>ED2</del>	<b><u>Evaporation Dam No.2, as referred to in MOD 1</u></b>
<del>ED3N</del>	<b><u>Evaporation Dam No.3 - North as referred to in MOD 1</u></b>
<del>ED3S</del>	<b><u>Evaporation Dam No.3 - South as referred to in MOD 1</u></b>
<del>ED3S-S</del>	<b><u>Evaporation Dam No.3 - South (southern lagoon) as referred to in Appendix 6</u></b>
<del>EPA</del>	<b><u>Environment Protection Authority</u></b>

Minister <b>MOD 1</b>	Minister for Planning and Infrastructure <b>Modification Environmental assessment titled “Woodlawn Bioreactor, Modification to surface water and leachate management” dated 11 December 2015 and the Response to Submissions, dated June 2016.</b>
NOW <b>Secretary</b> <b>Water-NSW</b>	Department of Primary Industries – NSW Office of Water <b>Secretary of the Department (or delegate)</b> <b>NSW Water Supplier</b>

**Delete all references to Director-General and replace with Secretary.**

**Delete all references to NOW and replace with DPI-Water.**

- (b) Schedule 3 – Condition 2 is amended by the insertion of the **bold and underlined** words / numbers and deletion of ~~struck-out~~ words/numbers as follows:

#### **Terms of Approval**

2. The Proponent shall carry out the Project generally in accordance with the:
- EA;
  - statement of commitments (see Appendix 1);
  - site layout plans and drawings in the EA (see Appendix 2); and
  - Modification Application MP 10 0012 MOD 1; and**
  - conditions of this approval.
- (c) Schedule 4 - Condition 10 is amended by the insertion of the **bold and underlined** words / numbers and deletion of ~~struck-out~~ words/numbers as follows:

#### **Independent Odour Audit**

10. Unless otherwise directed by the **Secretary** ~~Director-General~~, the Proponent shall implement all the mandatory odour controls and recommendations of any Independent Odour Audit/s. Recommendations of the **preceding** first Independent Odour Audit/s required under this approval shall be implemented prior to the commencement of expanded operations.

This audit must be documented in the Landfill EMP (see condition 3 in schedule 7).

- (d) Schedule 4 –Condition 17 is amended by the insertion of the **bold and underlined** words / numbers and deletion of ~~struck-out~~ words/numbers as follows:

#### **Soil and Water Management Plan**

17. The Proponent shall prepare and implement a Soil & Water Management Plan for the Landfill to the satisfaction of the **Secretary** ~~Director-General~~. This plan must:
- be prepared in consultation with **EPA, OEH, and DPI-Water** ~~NOW~~ by a suitably qualified and experienced expert whose appointment has been endorsed by the **Secretary** ~~Director-General~~;
  - be approved by the Secretary Director-General prior to the commencement of expanded operations;
  - must specifically consider soil and water management (including leachate management) at the Landfill, and **ED3N ED3S, ED3S-S and ED2;**
  - include a water balance for the project;
  - include a surface water monitoring program;
  - include a groundwater monitoring program; and

- (g) ensure that suitable measures are implemented to minimise water use, control soil erosion, prevent groundwater contamination, and comply with any surface water discharge limits.

This plan must be documented in the Landfill EMP (see condition 3 in schedule 7).

- (e) Schedule 4 – is amended by the insertion of the following new Condition 17A, after Condition 17 as shown in **bold and underlined** as follows:

**17A. The Proponent shall update the Soil and Water Management Plan for the landfill by including the proposed changes to water and leachate management in MOD 1. The Plan shall be prepared in accordance with the requirements of Condition 17, in consultation with Water-NSW and the EPA to the satisfaction of the Secretary. The updated Plan must be submitted for approval to the Secretary within two months of the date of this approval or as otherwise agreed to by the Secretary.**

- (f) Schedule 4 – Condition 18 is amended by the insertion of the **bold and underlined** words / numbers and deletion of ~~struck-out~~ words/numbers as follows:

### **Leachate Management**

18. The Proponent shall prepare and implement a Leachate Management Plan for the Landfill to the satisfaction of the ~~Secretary~~ Director-General. This plan must:
- be prepared in consultation with ~~EPA-OEH, and DPI-Water~~ **NOW** by a suitably qualified and experienced expert whose appointment has been endorsed by the ~~Secretary~~ Director-General;
  - be approved by ~~Secretary~~ Director-General prior to the commencement of expanded operations;
  - describe in the detail the leachate barrier system installed on site;
  - detail measures to collect and store all leachate generated by the landfill;
  - detail measures to prevent leachate from escaping to surface water, groundwater or the surrounding subsoils;
  - ensure all surface water from areas not subject to waste disposal or leachate disposal is directed away from the leachate management system; and
  - treat all water that has entered areas filled with waste, or been contaminated by leachate, as leachate.

This plan must be documented in the Landfill EMP (see condition 3 in schedule 7).

- (h) Schedule 4 – is amended by the insertion of the following new Condition 18A, after Condition 18 as shown in **bold and underlined** as follows:

**18A The Proponent shall update the Leachate Management Plan for the landfill by including the proposed changes to the leachate management in MOD 1. The Plan shall be prepared in accordance with the requirements of Condition 18, in consultation with Water-NSW and the EPA to the satisfaction of the Secretary. The updated Plan must be submitted for approval to the Secretary within two months of the date of this approval or as otherwise agreed to by the Secretary.**

- (i) Schedule 4 – is amended by the insertion of the following new Condition 18B, after Condition 18A as shown in **bold and underlined** as follows:

### **Long-term Leachate Management**

- 18B. The Proponent must develop and implement a Longterm Leachate Management Strategy that:**
- Minimises the generation of leachate at the premises;**

- Captures, treats and disposes of all leachate generated at the premises;
- Maintains leachate levels in the waste mass to a level that does not inhibit the efficiency of the landfill gas extraction system;
- Progressively removes all treated leachate from ED3; and
- Minimise the emission of offensive odours from leachate treated and stored onsite so there is no offsite impact.

The Longterm Leachate Management Strategy must be submitted to the Secretary and the EPA (for inclusion as a Pollution Reduction Program attached to environment protection licence 11436) for approval within two months of the approval date of MOD 1.

18C. Treated leachate must not be discharged to any part of ED3S, other than ED3S-S, until such time as the Long Term Leachate Management Strategy has been approved by the Secretary and the EPA.

18D. Seepage or leakage points in ED2 must be identified and repaired to the satisfaction of the Secretary and EPA prior to the transfer of any stormwater from ED3S to ED2.

18E. The Longterm Leachate Management Strategy must be operational no later than 20 December 2017 or as otherwise agreed by the Secretary.

- (j) Schedule 4 – Condition 28 is amended by the insertion of the **bold and underlined** words / numbers and deletion of ~~struck-out~~ words/numbers as follows:

#### LANDFILL CLOSURE AND REHABILITATION

28. The Proponent shall prepare and implement a Closure Plan for the Landfill to the satisfaction of the **Secretary** ~~Director-General~~. This plan must:
- be prepared in consultation with the OEH, **EPA, Water-NSW** and other relevant agencies by suitably qualified and experienced experts whose appointment has been endorsed by the **Secretary** ~~Director-General~~;
  - be submitted to the **Secretary** ~~Director-General~~ for approval within six (6) months of the date of this approval;
  - ensure that the final landform of the site is consistent with the figure in Appendix 3 of this approval; and
  - include details of the post closure management measures for all aspects of the Project.

This plan must be documented in the Landfill EMP (see condition 3 in schedule 7).

- (k) Schedule 4 – Condition 29 is amended by the insertion of the **bold and underlined** words / numbers and deletion of ~~struck-out~~ words/numbers as follows:

29. The Proponent shall prepare and implement a Rehabilitation Management Plan for the Landfill to the satisfaction of the **Secretary** ~~Director-General~~. This plan must:
- be prepared in consultation with the OEH, **EPA, Water-NSW and other relevant agencies** by a suitably qualified and experienced expert;
  - be submitted to the **Secretary** ~~Director-General~~ for approval within six (6) months of the date of this approval;
  - be undertaken in a manner which is complementary with the rehabilitation of the Woodlawn mine site; and
  - must ensure rehabilitation of the site does not impede or limit the rehabilitation works on any part of the Woodlawn Mine site.

This plan must be documented in the Landfill EMP (see condition 3 in schedule 7).

- (l) Schedule 7 – is amended by the insertion of the following new Condition 7A, after Condition 7 as shown in **bold and underlined** as follows:

**7A The Proponent shall provide a report to the Secretary of the complaints received, the response/action taken and timeframe in accordance with Condition 7, on an annual basis which is to be submitted within the AEMR. The report shall include all the matters required within subsections of Condition 7.**

- (m) Schedule 7 – Condition 10 is amended by the insertion of the **bold and underlined** words / numbers and deletion of ~~struck out~~ words/numbers as follows:

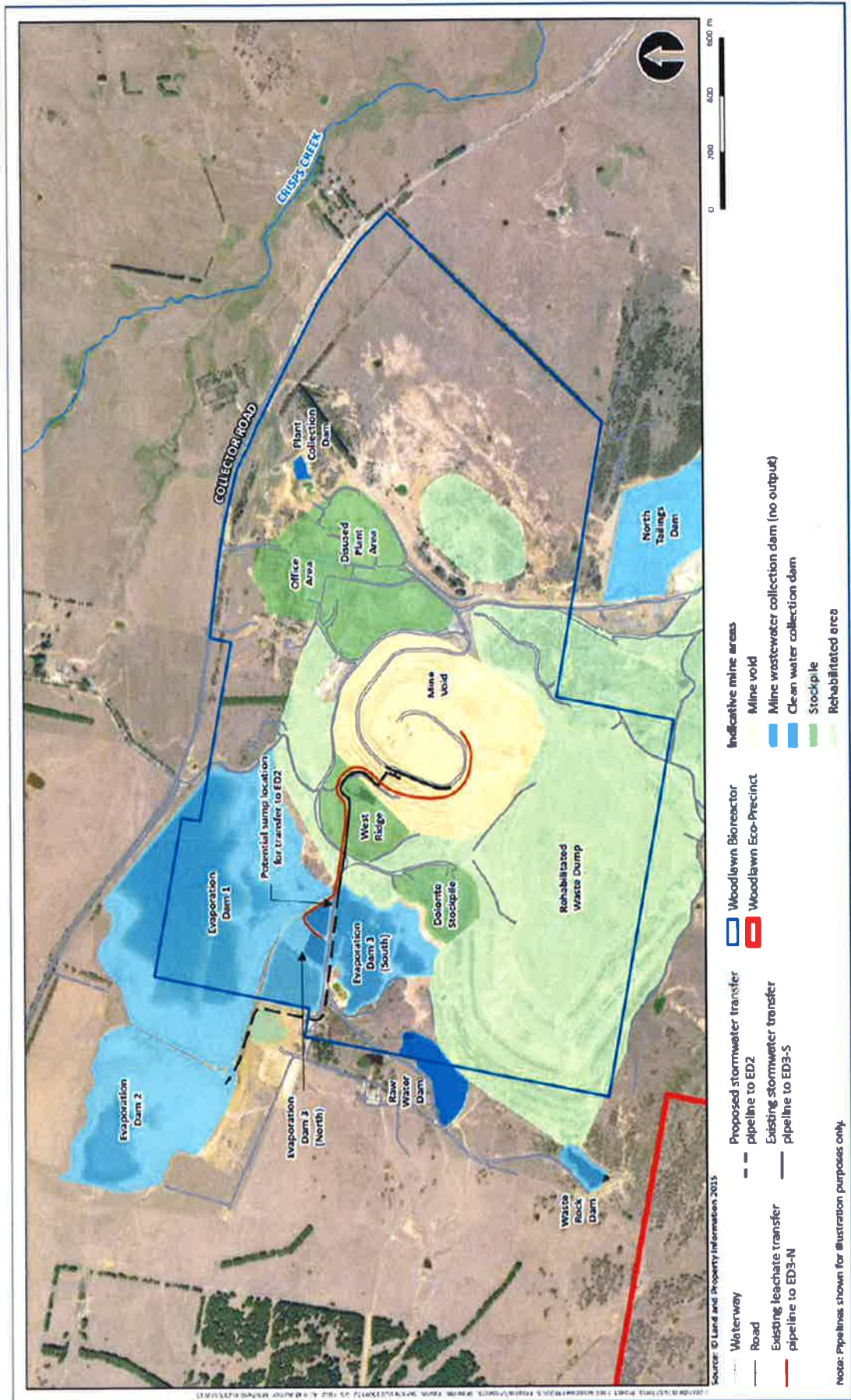
## **ACCESS TO INFORMATION**

10. From the commencement of expanded operations, the Proponent shall make the following information publicly available on its website as it is progressively required by the approval:
- a) a copy of all current statutory approvals;
  - b) a copy of the Environmental Management Plan required under this approval;
  - c) a copy of any Annual Environmental Management Report including monitoring results (over the last 5 years);
  - d) a copy of any Independent Environmental **and** or Odour Audit, and the Proponent's response to the recommendations in any audit;
  - e) **report of the complaints and the response/action taken to resolve the complaint as required by Condition 7;**
  - f) **a copy of the minutes of the Community Liaison Committee Meetings;** and
  - g) any other matter required by the Director-General.
- (n) Schedule 7 - Appendix 5 is included by the insertion of the following new figure titled Revised water and leachate management plan as shown in **bold and underlined** as follows:



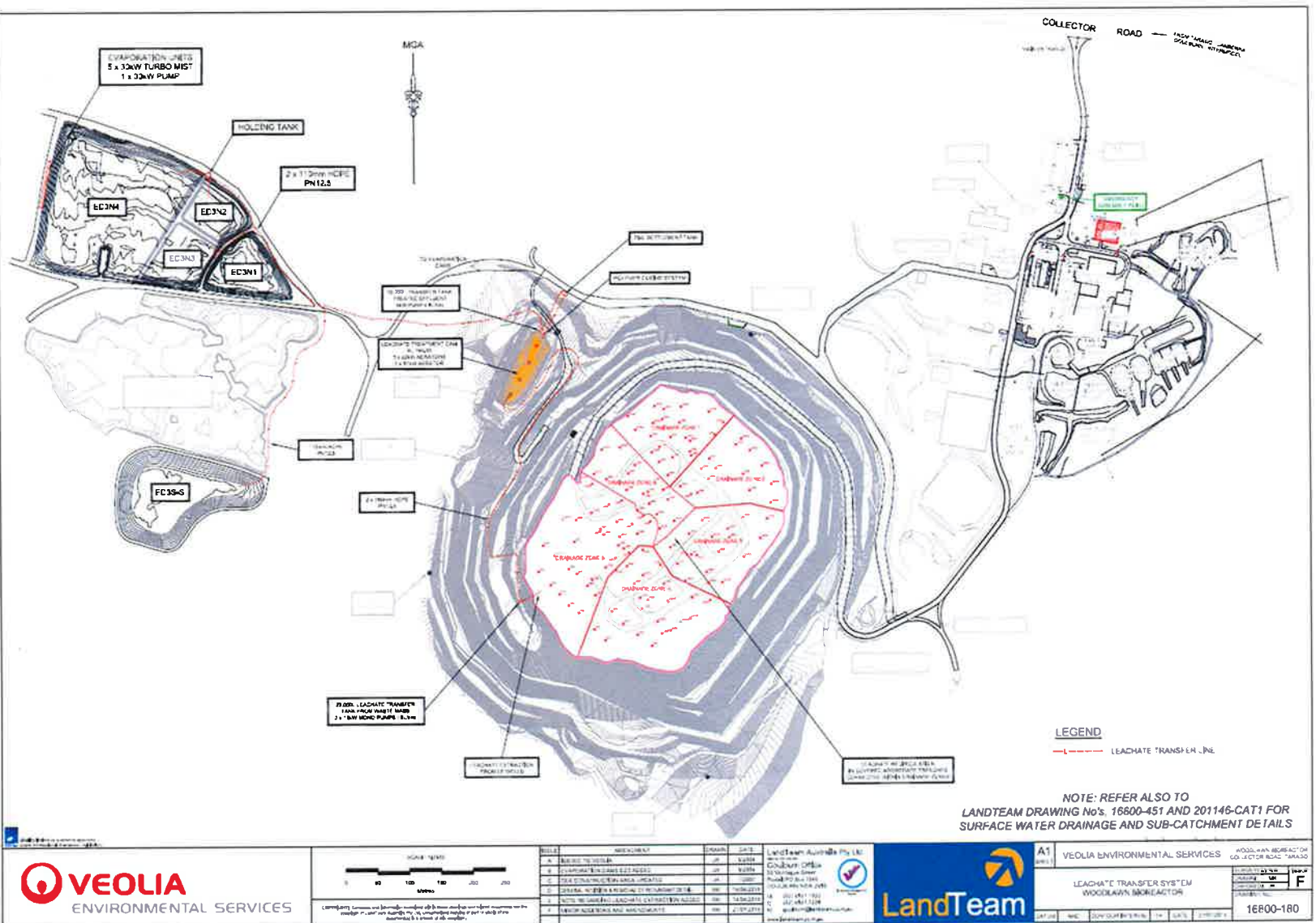
**Appendix 5 – Revised Water and Leachate Management Plan prepared by Veolia Environmental Services (Australia) Pty Ltd**

Veolia Environmental Services (Australia) Pty Ltd Woodlawn Bioreactor -  
Modification to surface water and leachate management



- (o) Schedule 7 - Appendix 6 is included by the insertion of the following new figure detailing ED3S and ED3S-S as sown in the **bold and underlined** as follows:

**Appendix 6 – Detail of ED3S, showing ED3S-S prepared by Veolia Environmental Services (Australia) Pty Ltd – Revision F dated 21 July 2016**



**End of Modifications to MP 10\_0012**